



DAFTAR HARGA FITTING uPVC

Efektif: 22 Agustus 2022

STANDAR SNI 06-0084:2002 STANDAR ISO 4422-1990

Rangkaian Pipa Rucika untuk Saluran Air Bersih Bertekanan

Seri	ND (Inch)	DIAMETER (mm)			Panjang Efektif (m/btg)	HARGA RUCIKASAFE		HARGA RUCIKALOK	
		Luar	x	Dalam		Per Meter	Per Batang	Per Meter	Per Batang
S 8 TEKANAN NOMINAL 12,5 BAR (1,25 Mpa)	1/2"	20	x	17.60	4	8.375	33.500		
	3/4"	25	x	22.60	4	10.700	42.800		
	1"	32	x	28.20	4	16.975	67.900		
	1 1/4"	40	x	35.20	4	26.300	105.200		
S 8 TEKANAN NOMINAL 16 BAR (1,6 Mpa)	2"	63	x	55.40	6			67.100	402.600
	3"	90	x	79.20	6			135.267	811.600
	4"	110	x	96.80	6			201.750	1.210.500
	6"	160	x	141.00	6			421.850	2.531.100
	8"	200	x	176.20	6			661.383	3.968.300
	10"	250	x	220.40	6			1.032.783	6.196.700
S 10 TEKANAN NOMINAL 10 BAR (1,0 Mpa)	1/2"	20	x	18.00	4	6.050	24.200		
	3/4"	25	x	22.60	4	8.900	35.600		
	1"	32	x	28.60	4	14.700	58.800		
	1 1/4"	40	x	36.20	4	21.525	86.100		
	1 1/2"	50	x	45.20	6	33.183	199.100		
S 10 TEKANAN NOMINAL 12,5 BAR (1,25 Mpa)	2"	63	x	57.00	6	52.317	313.900	54.250	325.500
	3"	90	x	81.40	6	106.067	636.400	110.367	662.200
	4"	110	x	99.40	6	159.533	957.200	165.683	994.100
	6"	160	x	144.60	6	338.783	2.032.700	347.550	2.085.300
	8"	200	x	180.80	6			543.917	3.263.500
	10"	250	x	226.20	6			845.067	5.070.400
	12"	315	x	285.00	6			1.364.967	8.189.800
	16"	400	x	361.80	6			2.216.917	13.301.500
	20"	500	x	452.20	6			3.625.483	21.752.900
S 12,5 TEKANAN NOMINAL 10 BAR (1,0 Mpa)	2"	63	x	58.20	6	42.300	253.800	45.150	270.900
	3"	90	x	83.00	6	88.450	530.700	91.967	551.800
	4"	110	x	101.60	6	128.450	770.700	135.250	811.500
	6"	160	x	147.60	6	275.550	1.653.300	287.700	1.726.200
	8"	200	x	184.60	6			446.600	2.679.600
	10"	250	x	230.80	6			698.133	4.188.800
	12"	315	x	290.80	6			1.130.050	6.780.300
	14"	355	x	327.80	6			1.435.883	8.615.300
	16"	400	x	369.40	6			1.818.700	10.912.200
	20"	500	x	461.80	6			2.999.433	17.996.600
	24"	630	x	581.80	6			4.713.667	28.282.000

*Harga sebelum PPN11%



DAFTAR HARGA FITTING uPVC

Efektif: 22 Agustus 2022

STANDAR SNI 06-0084:2002 STANDAR ISO 4422-1990

Rangkaian Pipa Rucika untuk Saluran Air Bersih Bertekanan

Seri	ND (Inch)	DIAMETER (mm)		Panjang Efektif (m/btg)	HARGA RUCIKASAFE		HARGA RUCIKALOK	
		Luar	Dalam		Per Meter	Per Batang	Per Meter	Per Batang
S 12,5 TEKANAN NOMINAL 8 BAR (0,8 Mpa)	1½"	50	x 46.00	6	28.333	170.000		
	2"	63	x 59.00	6	36.033	216.200	37.750	226.500
	3"	90	x 84.40	6	71.600	429.600	74.300	445.800
	4"	110	x 103.20	6	105.017	630.100	110.450	662.700
	6"	160	x 150.20	6	221.100	1.326.600	228.317	1.369.900
	8"	200	x 187.60	6			364.317	2.185.900
	10"	250	x 234.60	6			564.667	3.388.000
	12"	315	x 295.60	6			912.500	5.475.000
	14"	355	x 333.20	6			1.161.967	6.971.800
	16"	400	x 375.40	6			1.477.250	8.863.500
S 16 TEKANAN NOMINAL 8 BAR (0,8 Mpa)	20"	500	x 469.40	6			2.440.833	14.645.000
	24"	630	x 591.40	6			2.844.400	17.066.400

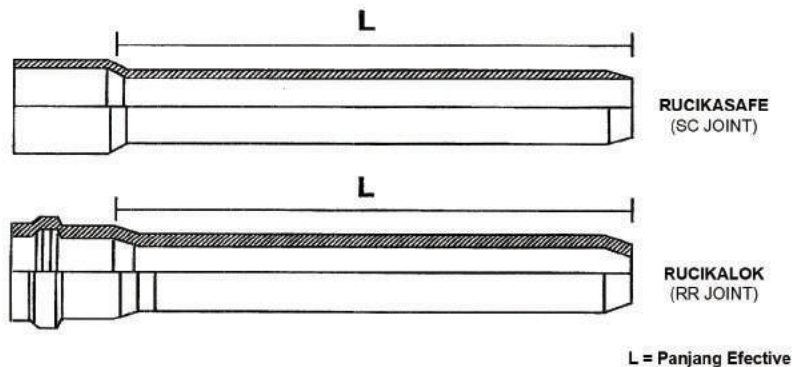
Note :

RUCIKASAFE = Solven Cement (SC) Joint, pipa dengan socket penyambungan lem.

RUCIKALOK = Rubber Ring (RR) Joint, pipa dengan socket penyambungan ring karet (z-joint).

Harga belum termasuk PPN 11%, loco pabrik Di Bekasi, Jawa Barat diatas truk.

Harga dapat berubah sewaktu-waktu tanpa pemberitahuan terlebih dahulu





DAFTAR HARGA FITTING uPVC

Efektif: 22 Agustus 2022
STANDAR SNI 06-0084:2002 STANDAR ISO 4422-1990

INJECTION MOULDING FITTING

TEE SOLVENT CEMENT (EQUAL & REDUCED)



Size (mm)	Price/Unit (Rp)
Ø 20 x 20 x 20	3.700
Ø 25 x 25 x 25	5.300
Ø 25 x 20 x 25	5.300
Ø 32 x 32 x 32	9.800
Ø 32 x 25 x 32	12.800
Ø 32 x 20 x 32	13.600
Ø 40 x 40 x 40	14.500
Ø 40 x 32 x 40	18.700
Ø 40 x 25 x 40	17.100
Ø 40 x 20 x 40	18.000
Ø 50 x 50 x 50	24.700
Ø 50 x 40 x 50	31.000
Ø 50 x 32 x 50	33.700
Ø 50 x 25 x 50	35.200
Ø 50 x 20 x 50	28.200
Ø 63 x 63 x 63	83.300
Ø 63 x 50 x 63	83.300
Ø 63 x 40 x 63	92.600
Ø 63 x 32 x 63	83.300
Ø 63 x 25 x 63	88.400
Ø 90 x 90 x 90	229.600
Ø 90 x 63 x 90	396.700
Ø 90 x 50 x 90	409.900
Ø 90 x 32 x 90	326.200
Ø 110 x 110 x 110	365.000
Ø 110 x 90 x 110	499.400
Ø 110 x 63 x 110	499.400
Ø 110 x 50 x 110	388.900
Ø 160 x 160 x 160	1.079.800
Ø 160 x 110 x 160	1.512.000
Ø 160 x 90 x 160	1.512.000
Ø 160 x 63 x 160	1.646.400

KNEE SOLVENT CEMENT



Size (mm)	Price/Unit (Rp)
Ø 20	3.500
Ø 25	4.600
Ø 32	7.100
Ø 40	11.400
Ø 50	18.700
Ø 63	78.600
Ø 90	182.300
Ø 110	310.700
Ø 160	870.900

FAUCET TEE (BSP Tread Taper)



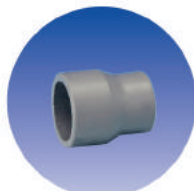
Size (mm)	Price/Unit (Rp)
Ø 20 x 1/2"	3.500
Ø 25 x 3/4"	4.600

FAUCET KNEE (BSP Tread Taper)



Size (mm)	Price/Unit (Rp)
Ø 20 x 1/2"	3.500
Ø 25 x 3/4"	5.100

REDUCER SC/ SC



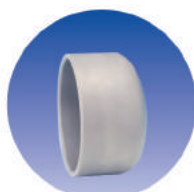
Size (mm)	Price/Unit (Rp)
Ø 25 x 20	4.200
Ø 32 x 25	6.200
Ø 32 x 20	7.100
Ø 40 x 32	10.700
Ø 40 x 25	11.200
Ø 50 x 40	14.900
Ø 50 x 32	17.200
Ø 50 x 25	49.700
Ø 90 x 63	91.800

FAUCET SOCKET



Size (mm)	Price/Unit (Rp)
Ø 20 x 1/2"	21.700
Ø 25 x 3/4"	27.400
Ø 32 x 1"	43.200
Ø 40 x 1 1/4"	48.800
Ø 50 x 1 1/2"	65.300
Ø 63 x 2"	93.200
Ø 90 x 3"	281.500
Ø 110 x 4"	416.400

CAP



Size (mm)	Price/Unit (Rp)
Ø 20	4.200
Ø 25	5.700
Ø 32	7.500
Ø 40	11.000
Ø 50	16.800

VALVE SOCKET



Size (mm)	Price/Unit (Rp)
Ø 20 x 1/2"	11.000
Ø 25 x 3/4"	11.900
Ø 32 x 1"	11.900
Ø 40 x 1 1/4"	18.400
Ø 50 x 1 1/2"	32.200
Ø 63 x 2"	52.400
Ø 90 x 3"	170.200
Ø 110 x 4"	328.700



DAFTAR HARGA FITTING uPVC

Efektif: 22 Agustus 2022
STANDAR SNI 06-0084:2002 STANDAR ISO 4422-1990

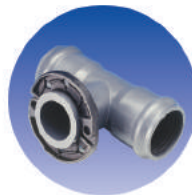
INJECTION MOULDING FITTING

RUBBER RING TEE



Size (mm)	Price/Unit (Rp)
Ø 63 x 63 x 63	595.500
Ø 90 x 90 x 90	781.800
Ø 90 x 63 x 90	725.300
Ø 110 x 110 x 110	896.000
Ø 110 x 90 x 110	839.100
Ø 110 x 63 x 110	839.100
Ø 160 x 160 x 160	1.983.200
Ø 160 x 110 x 160	1.776.900
Ø 160 x 90 x 160	2.032.400
Ø 160 x 63 x 160	1.337.100

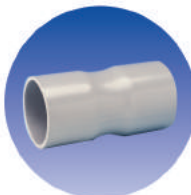
EQUAL & REDUCER TEE RR/ FL/ RR



Size (mm)	Price/Unit (Rp)
Ø 63 x 50 x 63	1.542.100
Ø 90 x 80 x 90	1.784.500
Ø 90 x 50 x 90	1.623.400
Ø 110 x 100 x 100	2.534.100
Ø 110 x 80 x 110	2.093.800
Ø 110 x 50 x 110	2.193.100
Ø 160 x 150 x 160	4.100.500
Ø 160 x 100 x 160	3.917.300
Ø 160 x 80 x 160	3.752.400

FABRICATED FITTING

DOUBLE SOCKET (Solvent Cement)



Size (mm)	Price/Unit (Rp)
Ø 20	7.300
Ø 25	7.300
Ø 32	14.600
Ø 40	14.600
Ø 50	21.900
Ø 63	29.200
Ø 90	36.500
Ø 110	51.100
Ø 160	138.600

DOUBLE SOCKET (Rubber Ring)



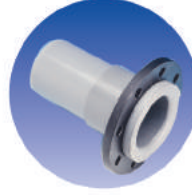
Size (mm)	Price/Unit (Rp)
Ø 63	53.200
Ø 90	90.000
Ø 110	128.200
Ø 160	287.400
Ø 200	513.900
Ø 250	962.500
Ø 315	1.630.500

REPAIR SOCKET (Rubber Ring)



Size (mm)	Price/Unit (Rp)
Ø 63	45.900
Ø 90	75.400
Ø 110	113.600
Ø 160	221.700
Ø 200	433.600
Ø 250	692.700
Ø 315	1.244.100

FLANGE SOCKET (Solvent Cement)



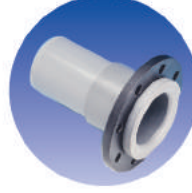
Size (mm)	Price/Unit (Rp)
Ø 50 x 40	185.400
Ø 63 x 50	200.500
Ø 90 x 80	409.300
Ø 110 x 100	789.400
Ø 160 x 150	928.000

FLANGE SOCKET (Rubber Ring)



Size (mm)	Price/Unit (Rp)
Ø 63 x 50	216.800
Ø 90 x 80	437.200
Ø 110 x 100	829.700
Ø 160 x 150	1.032.300
Ø 200 x 200	1.754.800
Ø 250 x 250	2.538.300
Ø 315 x 300	5.639.700

FLANGE SPIGOT



Size (mm)	Price/Unit (Rp)
Ø 63 x 50	193.200
Ø 90 x 80	402.500
Ø 110 x 100	782.100
Ø 160 x 150	920.700
Ø 200 x 200	1.581.400
Ø 250 x 250	2.238.100
Ø 315 x 300	5.091.600

FLANGE



Size (mm)	Price/Unit (Rp)
Ø 50	195.400
Ø 63	244.800
Ø 90	400.200
Ø 110	611.600
Ø 160	942.900
Ø 200	1.503.400
Ø 250	1.962.100
Ø 315	4.077.000



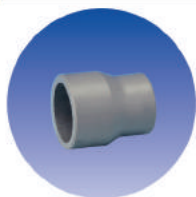
DAFTAR HARGA FITTING uPVC

Efektif: 22 Agustus 2022

STANDAR SNI 06-0084:2002 STANDAR ISO 4422-1990

FABRICATED FITTING

REDUCER SOCKET/SOCKET (Solvent Cement)



Size (mm)	Price/Unit (Rp)
Ø 63 x 32	27.000
Ø 63 x 50	21.900
Ø 90 x 63	43.800
Ø 90 x 50	36.500
Ø 110 x 90	51.100
Ø 110 x 63	58.400
Ø 160 x 110	153.200

LONG BEND DOUBLE SOCKET (Rubber Ring)



Size (mm)	Price/Unit (Rp)
Ø 63 x 11°	82.400
Ø 90 x 11°	162.900
Ø 110 x 11°	252.200
Ø 160 x 11°	682.300
Ø 200 x 11°	1.257.600
Ø 250 x 11°	2.172.800
Ø 315 x 11°	3.497.100
Ø 400 x 11°	On Request
Ø 500 x 11°	On Request
Ø 630 x 11°	On Request
Ø 63 x 22°	82.400
Ø 90 x 22°	177.500
Ø 110 x 22°	281.300
Ø 160 x 22°	805.000
Ø 200 x 22°	1.418.000
Ø 250 x 22°	2.413.500
Ø 315 x 22°	4.146.000
Ø 400 x 22°	On Request
Ø 500 x 22°	On Request
Ø 630 x 22°	On Request
Ø 63 x 45°	89.600
Ø 90 x 45°	199.300
Ø 110 x 45°	332.400
Ø 160 x 45°	958.200
Ø 200 x 45°	1.651.300
Ø 250 x 45°	3.018.600
Ø 315 x 45°	4.795.000
Ø 400 x 45°	On Request
Ø 500 x 45°	On Request
Ø 630 x 45°	On Request
Ø 63 x 90°	104.200
Ø 90 x 90°	221.200
Ø 110 x 90°	449.000
Ø 160 x 90°	1.089.400
Ø 200 x 90°	2.322.100
Ø 250 x 90°	4.221.700
Ø 315 x 90°	6.552.200
Ø 400 x 90°	On Request
Ø 500 x 90°	On Request
Ø 630 x 90°	On Request

CAP (Solvent Cement)



Size (mm)	Price/Unit (Rp)
Ø 63	21.900
Ø 90	43.800
Ø 110	51.100
Ø 160	138.600

LONG BEND SOCKET/ SPIGOT (Rubber Ring)



Size (mm)	Price/Unit (Rp)
Ø 63 x 11°	44.800
Ø 90 x 11°	107.000
Ø 110 x 11°	169.900
Ø 160 x 11°	515.600
Ø 200 x 11°	953.300
Ø 250 x 11°	1.582.300
Ø 315 x 11°	2.685.500
Ø 400 x 11°	5.468.600
Ø 500 x 11°	On Request
Ø 630 x 11°	On Request
Ø 63 x 22°	52.100
Ø 90 x 22°	121.600
Ø 110 x 22°	191.700
Ø 160 x 22°	603.100
Ø 200 x 22°	1.084.500
Ø 250 x 22°	1.786.400
Ø 315 x 22°	3.254.200
Ø 400 x 22°	On Request
Ø 500 x 22°	On Request
Ø 630 x 22°	On Request
Ø 63 x 45°	52.100
Ø 90 x 45°	136.200
Ø 110 x 45°	242.800
Ø 160 x 45°	727.000
Ø 200 x 45°	1.281.400
Ø 250 x 45°	2.296.800
Ø 315 x 45°	3.895.900
Ø 400 x 45°	On Request
Ø 500 x 45°	On Request
Ø 630 x 45°	On Request
Ø 63 x 90°	66.700
Ø 90 x 90°	158.000
Ø 110 x 90°	330.300
Ø 160 x 90°	836.400
Ø 200 x 90°	1.842.800
Ø 250 x 90°	3.310.300
Ø 315 x 90°	5.995.800
Ø 400 x 90°	On Request
Ø 500 x 90°	On Request
Ø 630 x 90°	On Request

LONG BEND DOUBLE SOCKET (Solvent Cement)



Size (mm)	Price/Unit (Rp)
Ø 63 x 11°	29.200
Ø 90 x 11°	73.000
Ø 110 x 11°	124.000
Ø 160 x 11°	430.200
Ø 63 x 22°	36.500
Ø 90 x 22°	87.500
Ø 110 x 22°	145.900
Ø 160 x 22°	510.400
Ø 63 x 45°	36.500
Ø 90 x 45°	102.100
Ø 110 x 45°	189.600
Ø 160 x 45°	641.700
Ø 63 x 90°	51.100
Ø 90 x 90°	124.000
Ø 110 x 90°	284.400
Ø 160 x 90°	743.800

RUCIKA

SAFE & LOK



DAFTAR HARGA FITTING uPVC

Efektif: 22 Agustus 2022

STANDAR SNI 06-0084:2002 STANDAR ISO 4422-1990

FABRICATED FITTING

REDUCER SOCKET/ SOCKET (Rubber Ring)



Size (mm)	Price/Unit (Rp)
Ø 90 x 63	66.700
Ø 110 x 90	114.300
Ø 110 x 63	103.200
Ø 160 x 110	242.800
Ø 160 x 90	201.800
Ø 200 x 160	406.200
Ø 200 x 110	381.300
Ø 250 x 200	741.800
Ø 250 x 160	668.700
Ø 315 x 250	1.327.100
Ø 315 x 200	1.252.200

Welded Tee (FRP Reinforced) 3 x Socket Rubber Ring



Size (mm)	Price/Unit (Rp)
Ø 200 x 200 x 200	1.927.600
Ø 200 x 160 x 200	1.670.200
Ø 200 x 110 x 200	1.484.100
Ø 200 x 90 x 200	1.376.500
Ø 250 x 250 x 250	3.228.000
Ø 315 x 315 x 315	4.863.600
Ø 315 x 200 x 315	3.727.500
Ø 315 x 160 x 315	3.354.500
Ø 315 x 110 x 315	3.054.000

CAP (Rubber Ring)



Size (mm)	Price/Unit (Rp)
Ø 63mm	44.800
Ø 90mm	99.700
Ø 110mm	140.700
Ø 160mm	340.600

Welded Tee (FRP Reinforced) Socket / Flange



Size (mm)	Price/Unit (Rp)
Ø 200 x 200 x 200	3.782.500
Ø 200 x 150 x 200	2.890.100
Ø 200 x 100 x 200	2.418.100
Ø 200 x 80 x 200	1.920.300
Ø 250 x 250 x 250	5.831.800
Ø 315 x 300 x 315	10.044.600
Ø 315 x 200 x 315	5.601.700
Ø 315 x 150 x 315	4.672.400
Ø 315 x 100 x 315	4.016.000

AKSESORIS

Perangkat Mur Baut dan Ring untuk Koneksi Flange



Size (mm)	Price/Unit (Rp)
Ø 40mm	40.900
Ø 50mm	40.900
Ø 63mm	40.900
Ø 90mm	85.300
Ø 110mm	94.100
Ø 160mm	338.200
Ø 200mm	364.500
Ø 250mm	507.400
Ø 315mm	633.500

BLIND FLANGE



Size (mm)	Price/Unit (Rp)
Ø 40mm	227.900
Ø 50mm	295.700
Ø 80mm	499.600
Ø 100mm	739.000
Ø 150mm	1.452.500
Ø 200mm	1.911.200
Ø 250mm	2.446.200
Ø 300mm	4.000.600

RUBBER RING (SBR)



Size (mm)	Price/Unit (Rp)
Ø 63mm	10.100
Ø 90mm	14.100
Ø 110mm	18.500
Ø 160mm	33.500
Ø 200mm	48.700
Ø 250mm	73.600
Ø 315mm	149.800
Ø 400mm	285.700
Ø 500mm	1.264.600

LUBRICANT



Harga Perbotol
Rp. 114.100

LEM RUGLUE



Harga Perkaleng
Rp. 60.500

Note :

RUCIKASAFE = Solvent Cement (SC) Joint, pipa dengan socket penyambungan lem.

RUCIKALOK = Rubber Ring (RR) Joint, pipa dengan socket penyambungan ring karet (z-joint).

Harga belum termasuk PPN 11%, loco pabrik di Bekasi, Jawa Barat diatas truk.

Harga dapat berubah sewaktu-waktu tanpa pemberitahuan terlebih dahulu

PT WAHANA DUTA JAYA RUCIKA

ALIA Building 7th Floor, Jl. M.I Ridwan Rais 10-18,
Jakarta 10110 - INDONESIA

Telp: (021) 386 7717

Fax: (021) 386 7686

Email: info@rucika.co.id

Rucika @rucikaofficial @rucikaofficial

www.rucika.co.id

02.03.2022