



**PIPA PVC RUCIKA STANDARD UNTUK APLIKASI AIR BERSIH & AIR LIMBAH**

PRODUK	DN		OD (mm)	4 M / BATANG		5,8 M / BATANG*	
	mm	inch		AW**	D***	AW**	D***
 <p><b>RUCIKA Standard</b></p>	16	1/2"	22	Rp. 31.500,-	*	Rp. 46.700,-	*
	20	3/4"	26	Rp. 42.700,-	*	Rp. 64.000,-	*
	25	1"	32	Rp. 58.400,-	*	Rp. 87.100,-	*
	35	1 1/4"	42	Rp. 87.200,-	Rp. 54.800,-	Rp. 130.900,-	Rp. 82.500,-
	40	1 1/2"	48	Rp. 100.200,-	Rp. 61.900,-	Rp. 150.100,-	Rp. 92.500,-
	50	2"	60	Rp. 128.100,-	Rp. 79.400,-	Rp. 191.600,-	Rp. 118.800,-
	65	2 1/2"	76	Rp. 186.700,-	Rp. 107.200,-	Rp. 279.700,-	Rp. 160.600,-
	75	3"	89	Rp. 262.900,-	Rp. 142.300,-	Rp. 394.100,-	Rp. 213.000,-
	100	4"	114	Rp. 435.600,-	Rp. 223.800,-	Rp. 652.900,-	Rp. 335.300,-
	125	5"	140	Rp. 689.900,-	Rp. 344.500,-	Rp. 1.034.800,-	Rp. 516.200,-
	150	6"	165	Rp. 967.600,-	Rp. 454.300,-	Rp. 1.451.400,-	Rp. 680.900,-
	200	8"	216	Rp. 1.623.500,-	Rp. 798.800,-	Rp. 2.435.300,-	Rp. 1.197.700,-
250	10"	267	Rp. 2.510.200,-	Rp. 1.315.700,-	Rp. 3.765.200,-	Rp. 1.973.200,-	
300	12"	318	Rp. 3.539.300,-	Rp. 1.846.700,-	Rp. 5.308.800,-	Rp. 2.770.000,-	

**PIPA PVC RUCIKA JIS K-6741 / K-6742 UNTUK APLIKASI AIR BERSIH & AIR LIMBAH**

PRODUK	DN		OD (mm)	4 M / BATANG		5,8 M / BATANG*	
	mm	inch		VP**	VU***	VP**	VU***
 <p><b>RUCIKA JIS</b></p>	16	1/2"	22	Rp. 57.000,-	*	Rp. 81.900,-	*
	20	3/4"	26	Rp. 68.200,-	*	Rp. 99.000,-	*
	25	1"	32	Rp. 99.000,-	*	Rp. 143.100,-	*
	35	1 1/4"	42	Rp. 133.600,-	*	Rp. 192.900,-	*
	40	1 1/2"	48	Rp. 173.500,-	Rp. 91.000,-	Rp. 251.300,-	Rp. 131.600,-
	50	2"	60	Rp. 246.300,-	Rp. 114.800,-	Rp. 356.900,-	Rp. 165.900,-
	65	2 1/2"	76	Rp. 316.800,-	Rp. 181.500,-	Rp. 459.200,-	Rp. 262.800,-
	75	3"	89	Rp. 504.600,-	Rp. 265.200,-	Rp. 731.000,-	Rp. 384.700,-
	100	4"	114	Rp. 779.700,-	Rp. 398.000,-	Rp. 1.130.200,-	Rp. 576.900,-
	125	5"	140	Rp. 976.000,-	Rp. 599.200,-	Rp. 1.415.000,-	Rp. 868.800,-
	150	6"	165	Rp. 1.465.100,-	Rp. 861.400,-	Rp. 2.124.500,-	Rp. 1.249.100,-
	200	8"	216	Rp. 2.215.900,-	Rp. 1.437.100,-	Rp. 3.212.400,-	Rp. 2.083.700,-
250	10"	267	Rp. 3.376.100,-	Rp. 2.128.200,-	Rp. 4.894.600,-	*	
300	12"	318	Rp. 4.789.100,-	Rp. 2.988.100,-	Rp. 6.943.600,-	*	

**Keterangan :**

- \* Khusus Wilayah Medan.
- \*\* AW / VP : Pipa untuk tekanan kerja 10 Kg / cm<sup>2</sup> | \*\*\* D / VU : Pipa untuk aplikasi air limbah.
- Harga sudah termasuk PPN 11%.
- Perubahan harga dapat terjadi tanpa pemberitahuan terlebih dahulu.
- DN: Diameter Nominal | OD: Outside Diameter



**RUglue**  
LEM PIPA & FITTING PVC

**Rekat Sempurna**

LEM PIPA - SAMBUNGAN (FITTING) PVC

Lem Pipa uPVC		
Jenis	Ukuran	Harga
Kemasan Tube	50 Gr	Rp.10.300,-
Kemasan Botol	60 Gr	Rp.12.300,-
Kemasan Kaleng	400 Gr	Rp.61.100,-

**FITTING RUCIKA STANDARD JIS K - 6743 UNTUK APLIKASI AIR BERSIH BERTEKANAN**

**Clean Out (AW)**



mm	DN	inch	ISI / BOX	HARGA / PCS
50	2"	36	Rp. 16.500,-	
75	3"	16	Rp. 36.400,-	
100	4"	18	Rp. 60.500,-	
150	6"	2	Rp. 158.600,-	

**FAUCET ELBOW (AW)**



mm	DN	inch	ISI / BOX	HARGA / PCS
16 x 1/2"	1/2"	200	Rp. 2.900,-	
20 x 1/2"	1/2" x 3/4"	175	Rp. 3.200,-	
20 x 3/4"	3/4"	130	Rp. 4.300,-	
25 x 1"	1"	85	Rp. 6.200,-	

**UNION SOCKET (AW)**



mm	DN	inch	ISI / BOX	HARGA / PCS
16	1/2"	110	Rp. 32.600,-	
20	3/4"	72	Rp. 39.900,-	
25	1"	54	Rp. 54.800,-	
35	1 1/4"	30	Rp. 90.900,-	
40	1 1/2"	18	Rp. 123.900,-	

**UNION THREAD (AW)**



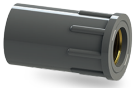
mm	DN	inch	ISI / BOX	HARGA / PCS
16	1/2"	110	Rp. 32.600,-	
20	3/4"	72	Rp. 39.900,-	
25	1"	54	Rp. 54.800,-	
35	1 1/4"	30	Rp. 90.900,-	
40	1 1/2"	18	Rp. 123.900,-	

### FAUCET ELBOW with Metal Insert ( AW )



DN		ISI / BOX	HARGA / PCS
mm	inch		
16 x 1/2"	1/2"	200 (4@50PCS)	Rp. 12.200,-
20 x 1/2"	1/2" x 3/4"	180	Rp. 17.700,-
20 x 3/4"	3/4"	120 (4@30PCS)	Rp. 20.600,-

### FAUCET SOCKET with Metal Insert ( AW )



DN		ISI / BOX	HARGA / PCS
mm	inch		
16 x 1/2"	1/2"	240 (4@60PCS)	Rp. 11.800,-
20 x 1/2"	1/2" x 3/4"	205	Rp. 17.400,-
20 x 3/4"	3/4"	160 (4@40PCS)	Rp. 19.600,-

### ELBOW ( AW )



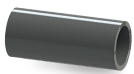
DN		ISI / BOX	HARGA / PCS
mm	inch		
16	1/2"	225	Rp. 2.900,-
20	3/4"	145	Rp. 3.700,-
25	1"	80	Rp. 5.500,-
35	1 1/4"	40	Rp. 9.500,-
40	1 1/2"	25	Rp. 13.100,-
50	2"	18	Rp. 19.800,-
65	2 1/2"	28	Rp. 31.300,-
75	3"	16	Rp. 52.200,-
100	4"	9	Rp. 96.500,-
125	5"	5	Rp. 146.100,-
150	6"	5	Rp. 244.100,-
200	8"	2	Rp. 552.700,-
250	10"	1	Rp. 738.600,-
300	12"	1	Rp. 1.097.200,-

### VALVE SOCKET ( AW )



DN		ISI / BOX	HARGA / PCS
mm	inch		
16 x 1/2"	1/2"	450	Rp. 2.000,-
20 x 1/2"	1/2" x 3/4"	250	Rp. 3.100,-
16 x 3/4"	3/4" x 1/2"	285	Rp. 2.800,-
20 x 3/4"	3/4"	320	Rp. 2.900,-
16 x 1"	1" x 1/2"	200	Rp. 3.100,-
20 x 1"	1" x 3/4"	175	Rp. 3.200,-
25 x 1"	1"	175	Rp. 3.700,-
35 x 1 1/4"	1 1/4"	100	Rp. 6.600,-
40 x 1 1/2"	1 1/2"	60	Rp. 9.100,-
50 x 2"	2"	40	Rp. 13.200,-
65 x 2 1/2"	2 1/2"	54	Rp. 14.800,-
75 x 3"	3"	48	Rp. 30.800,-
100 x 4"	4"	18	Rp. 54.300,-

### SOCKET ( AW )



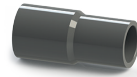
DN		ISI / BOX	HARGA / PCS
mm	inch		
16	1/2"	300	Rp. 2.500,-
20	3/4"	200	Rp. 3.000,-
25	1"	100	Rp. 4.400,-
35	1 1/4"	64	Rp. 7.400,-
40	1 1/2"	40	Rp. 10.600,-
50	2"	25	Rp. 16.400,-
65	2 1/2"	40	Rp. 27.400,-
75	3"	32	Rp. 39.400,-
100	4"	12	Rp. 77.700,-
150	6"	4	Rp. 163.600,-
200	8"	4	Rp. 330.300,-
250	10"	2	Rp. 523.100,-

### CAP ( AW )



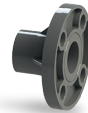
DN		ISI / BOX	HARGA / PCS
mm	inch		
16	1/2"	500	Rp. 1.700,-
20	3/4"	400	Rp. 2.000,-
25	1"	250	Rp. 3.000,-
35	1 1/4"	128	Rp. 4.800,-
40	1 1/2"	84	Rp. 8.200,-
50	2"	54	Rp. 9.500,-
65	2 1/2"	20	Rp. 19.500,-
75	3"	48	Rp. 29.400,-
100	4"	18	Rp. 61.500,-
150	6"	8	Rp. 105.500,-
200	8"	3	Rp. 206.900,-

### REDUCING SOCKET ( AW )



DN		ISI / BOX	HARGA / PCS
mm	inch		
20 x 16	3/4" x 1/2"	225	Rp. 3.100,-
25 x 16	1" x 1/2"	215	Rp. 3.200,-
25 x 20	1" x 3/4"	150	Rp. 4.200,-
35 x 16	1 1/4" x 1/2"	110	Rp. 4.500,-
35 x 20	1 1/4" x 3/4"	110	Rp. 5.300,-
35 x 25	1 1/4" x 1"	110	Rp. 6.200,-
40 x 16	1 1/2" x 1/2"	72	Rp. 6.600,-
40 x 20	1 1/2" x 3/4"	65	Rp. 7.000,-
40 x 25	1 1/2" x 1"	65	Rp. 8.500,-
40 x 35	1 1/2" x 1 1/4"	45	Rp. 9.600,-
50 x 16	2" x 1/2"	45	Rp. 10.000,-
50 x 20	2" x 3/4"	45	Rp. 10.600,-
50 x 25	2" x 1"	40	Rp. 11.700,-
50 x 35	2" x 1 1/4"	45	Rp. 13.600,-
50 x 40	2" x 1 1/2"	40	Rp. 14.500,-
65 x 40	2 1/2" x 1 1/2"	20	Rp. 21.000,-
65 x 50	2 1/2" x 2"	20	Rp. 22.800,-
75 x 20	3" x 3/4"	20	Rp. 16.900,-
75 x 25	3" x 1"	16	Rp. 17.500,-
75 x 35	3" x 1 1/4"	16	Rp. 21.300,-
75 x 40	3" x 1 1/2"	16	Rp. 23.700,-
75 x 50	3" x 2"	16	Rp. 25.400,-
75 x 65	3" x 2 1/2"	12	Rp. 37.700,-
100 x 40	4" x 1 1/2"	18	Rp. 62.100,-
100 x 50	4" x 2"	18	Rp. 67.500,-
100 x 65	4" x 2 1/2"	18	Rp. 68.900,-
100 x 75	4" x 3"	18	Rp. 72.100,-
125 x 75	5" x 3"	9	Rp. 98.300,-
125 x 100	5" x 4"	10	Rp. 108.700,-
150 x 75	6" x 3"	5	Rp. 123.800,-
150 x 100	6" x 4"	5	Rp. 135.000,-
150 x 125	6" x 5"	5	Rp. 141.400,-
200 x 100	8" x 4"	4	Rp. 242.600,-
200 x 125	8" x 5"	2	Rp. 260.500,-
200 x 150	8" x 6"	2	Rp. 276.700,-
250 x 200	10" x 8"	2	Rp. 483.600,-

### FLANGE ( AW )



DN		ISI / BOX	HARGA / PCS
mm	inch		
50	2"	31	Rp. 39.400,-
65	2 1/2"	15	Rp. 51.300,-
75	3"	15	Rp. 60.900,-
100	4"	12	Rp. 100.500,-
150	6"	8	Rp. 229.300,-

### Y - BRANCH ( AW )



DN		ISI / BOX	HARGA / PCS
mm	inch		
50	2"	20	Rp. 43.700,-
65 x 50	2 1/2" x 2"	17	Rp. 56.700,-
65	2 1/2"	10	Rp. 62.100,-
75 x 50	3" x 2"	11	Rp. 66.500,-
75	3"	10	Rp. 94.600,-
100 x 50	4" x 2"	7	Rp. 119.500,-
100 x 75	4" x 3"	6	Rp. 136.000,-
100	4"	4	Rp. 199.300,-
150 x 75	6" x 3"	2	Rp. 350.500,-
150 x 100	6" x 4"	4	Rp. 376.300,-
200 x 100	8" x 4"	3	Rp. 584.900,-
200	8"	2	Rp. 1.541.300,-

### PLUG ( AW )



DN		ISI / BOX	HARGA / PCS
mm	inch		
16	1/2"	1200 (6@200pcs)	Rp. 1.600,-
20	3/4"	700 (7@100pcs)	Rp. 2.000,-
25	1"	575	Rp. 2.200,-

### DOUBLE NIPPLE ( AW )



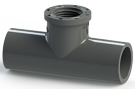
DN		ISI / BOX	HARGA / PCS
mm	inch		
16	1/2"	560	Rp. 1.600,-
20	3/4"	335	Rp. 2.000,-
25	1"	220	Rp. 3.200,-

### TEE (AW)



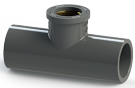
mm	DN		ISI / BOX	HARGA / PCS
	inch			
16	1/2"		150	Rp. 3.700,-
20 x 16	3/4" x 1/2"		100	Rp. 5.000,-
20	3/4"		100	Rp. 5.000,-
25 x 16	1" x 1/2"		65	Rp. 7.300,-
25 x 20	1" x 3/4"		65	Rp. 7.600,-
25	1"		60	Rp. 8.100,-
35 x 16	1 1/4" x 1/2"		45	Rp. 10.700,-
35 x 20	1 1/4" x 3/4"		45	Rp. 11.500,-
35 x 25	1 1/4" x 1"		35	Rp. 12.900,-
35	1 1/4"		30	Rp. 13.200,-
40 x 16	1 1/2" x 1/2"		25	Rp. 14.800,-
40 x 20	1 1/2" x 3/4"		24	Rp. 14.800,-
40 x 25	1 1/2" x 1"		24	Rp. 15.800,-
40 x 35	1 1/2" x 1 1/4"		20	Rp. 17.600,-
40	1 1/2"		20	Rp. 17.600,-
50 x 16	2" x 1/2"		17	Rp. 17.700,-
50 x 20	2" x 3/4"		15	Rp. 18.000,-
50 x 25	2" x 1"		15	Rp. 18.600,-
50 x 35	2" x 1 1/4"		40	Rp. 25.500,-
50 x 40	2" x 1 1/2"		12	Rp. 25.600,-
50	2"		30	Rp. 28.000,-
65 x 40	2 1/2" x 1 1/2"		6	Rp. 42.400,-
65 x 50	2 1/2" x 2"		17	Rp. 42.700,-
65	2 1/2"		16	Rp. 45.600,-
75 x 20	3" x 3/4"		20	Rp. 38.000,-
75 x 25	3" x 1"		18	Rp. 39.100,-
75 x 35	3" x 1 1/4"		18	Rp. 43.800,-
75 x 40	3" x 1 1/2"		16	Rp. 46.000,-
75 x 50	3" x 2"		20	Rp. 49.500,-
75 x 65	3" x 2 1/2"		10	Rp. 56.500,-
75	3"		12	Rp. 64.400,-
100 x 40	4" x 1 1/2"		8	Rp. 98.400,-
100 x 50	4" x 2"		6	Rp. 99.300,-
100 x 65	4" x 2 1/2"		7	Rp. 118.000,-
100 x 75	4" x 3"		6	Rp. 120.700,-
100	4"		5	Rp. 128.600,-
125 x 75	5" x 3"		4	Rp. 170.800,-
125 x 100	5" x 4"		6	Rp. 175.400,-
125	5"		5	Rp. 226.800,-
150 x 50	6" x 2"		3	Rp. 255.600,-
150 x 75	6" x 3"		2	Rp. 284.100,-
150 x 100	6" x 4"		2	Rp. 296.200,-
150 x 125	6" x 5"		4	Rp. 320.400,-
150	6"		3	Rp. 323.400,-
200	8"		2	Rp. 670.100,-

### FAUCET TEE (AW)



mm	DN		ISI / BOX	HARGA / PCS
	inch			
16 x 1/2"	1/2"		140	Rp. 4.800,-
20 x 1/2"	1/2" x 3/4"		100	Rp. 5.000,-
20 x 3/4"	3/4"		85	Rp. 5.300,-

### FAUCET TEE with Metal Insert (AW)



mm	DN		ISI / BOX	HARGA / PCS
	inch			
16 x 1/2"	1/2"		140	Rp. 19.100,-
20 x 1/2"	1/2" x 3/4"		110	Rp. 19.800,-
20 x 3/4"	3/4"		85	Rp. 34.500,-

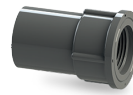
## FITTING RUCIKA STANDARD JIS K - 6739 UNTUK APLIKASI AIR KOTOR & BUANGAN

### SOCKET (D - DS)



mm	DN		ISI / BOX	HARGA / PCS
	inch			
35	1 1/4"		200	Rp. 2.600,-
40	1 1/2"		115	Rp. 3.100,-
50	2"		72	Rp. 4.700,-
65	2 1/2"		100	Rp. 7.600,-
75	3"		60	Rp. 11.800,-
100	4"		30	Rp. 21.000,-
125	5"		30	Rp. 39.500,-
150	6"		18	Rp. 51.400,-
200	8"		8	Rp. 136.100,-
250	10"		8	Rp. 207.900,-

### FAUCET SOCKET (AW)



mm	DN		ISI / BOX	HARGA / PCS
	inch			
16 x 1/2"	1/2"		300	Rp. 2.500,-
20 x 1/2"	1/2" x 3/4"		200	Rp. 3.000,-
20 x 3/4"	3/4"		180	Rp. 3.200,-
25 x 1/2"	1/2" x 1"		165	Rp. 3.200,-
25 x 3/4"	3/4" x 1"		150	Rp. 4.100,-
16 x 1"	1" x 1/2"		140	Rp. 4.100,-
20 x 1"	1" x 3/4"		130	Rp. 4.300,-
25 x 1"	1"		120	Rp. 5.300,-
35 x 1 1/4"	1 1/4"		60	Rp. 8.100,-
40 x 1 1/2"	1 1/2"		40	Rp. 10.700,-
50 x 2"	2"		25	Rp. 13.200,-
65 x 2 1/2"	2 1/2"		12	Rp. 13.800,-
75 x 3"	3"		8	Rp. 33.300,-
100 x 4"	4"		18	Rp. 65.200,-

### 45° ELBOW (AW)



mm	DN		ISI / BOX	HARGA / PCS
	inch			
25	1"		90	Rp. 6.200,-
35	1 1/4"		48	Rp. 10.600,-
40	1 1/2"		27	Rp. 13.300,-
50	2"		44	Rp. 22.700,-
65	2 1/2"		24	Rp. 34.500,-
75	3"		18	Rp. 54.400,-
100	4"		18	Rp. 94.300,-
125	5"		4	Rp. 139.100,-
150	6"		4	Rp. 269.100,-
200	8"		2	Rp. 578.100,-
250	10"		1	Rp. 1.166.700,-

### LARGE RADIUS TEE (AW)



mm	DN		ISI / BOX	HARGA / PCS
	inch			
40	1 1/2"		20	Rp. 15.200,-
50 x 40	2" x 1 1/2"		8	Rp. 27.000,-
50	2"		6	Rp. 37.000,-
65 x 40	2 1/2" x 1 1/2"		6	Rp. 42.400,-
65 x 50	2 1/2" x 2"		15	Rp. 49.900,-
65	2 1/2"		14	Rp. 52.700,-
75 x 50	3" x 2"		14	Rp. 65.000,-
75	3"		8	Rp. 70.900,-
100 x 40	4" x 1 1/2"		7	Rp. 107.400,-
100 x 50	4" x 2"		15	Rp. 123.800,-
100 x 65	4" x 2 1/2"		6	Rp. 149.500,-
100 x 75	4" x 3"		4	Rp. 174.300,-
100	4"		7	Rp. 208.500,-
125 x 75	5" x 3"		4	Rp. 210.300,-
125 x 100	5" x 4"		6	Rp. 246.300,-
125	5"		2	Rp. 296.200,-
150 x 75	6" x 3"		5	Rp. 333.800,-
150 x 100	6" x 4"		5	Rp. 396.300,-
150	6"		3	Rp. 444.000,-
200 x 100	8" x 4"		2	Rp. 621.200,-
200 x 150	8" x 6"		2	Rp. 791.900,-
200	8"		2	Rp. 921.900,-

### ELBOW (D - DL)



mm	DN		ISI / BOX	HARGA / PCS
	inch			
35	1 1/4"		90	Rp. 4.000,-
40	1 1/2"		60	Rp. 5.000,-
50	2"		100	Rp. 8.200,-
65	2 1/2"		45	Rp. 13.100,-
75	3"		30	Rp. 19.100,-
100	4"		15	Rp. 38.000,-
125	5"		15	Rp. 93.100,-
150	6"		10	Rp. 110.800,-
200	8"		3	Rp. 243.900,-
250	10"		2	Rp. 485.600,-
300	12"		1	Rp. 734.200,-

### CLEAN OUT ( D )



mm	DN		ISI / BOX	HARGA / PCS
	inch			
50	2"		90	Rp. 8.300,-
75	3"		80	Rp. 13.100,-
100	4"		36	Rp. 34.000,-

### P-TRAP ( D )



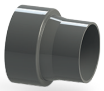
mm	DN		ISI / BOX	HARGA / PCS
	inch			
40	1½"		18	Rp. 18.300,-
50	2"		12	Rp. 19.200,-
75	3"		12	Rp. 41.000,-

### LARGE RADIUS TEE ( D - LT )



mm	DN		ISI / BOX	HARGA / PCS
	inch			
40 x 35	1½"	1¼"	35	Rp. 9.200,-
40	1½"		30	Rp. 9.300,-
50 x 40	2"	1½"	18	Rp. 13.400,-
50	2"		15	Rp. 18.300,-
65 x 40	2½"	1½"	10	Rp. 18.600,-
65 x 50	2½"	2"	30	Rp. 22.800,-
65	2½"		18	Rp. 28.500,-
75 x 50	3"	2"	20	Rp. 29.800,-
75 x 65	3"	2½"	16	Rp. 38.500,-
75	3"		15	Rp. 39.200,-
100 x 40	4"	1½"	15	Rp. 42.500,-
100 x 50	4"	2"	14	Rp. 46.100,-
100 x 75	4"	3"	8	Rp. 63.000,-
100	4"		6	Rp. 72.100,-
125 x 100	5"	4"	4	Rp. 124.300,-
150 x 75	6"	3"	5	Rp. 127.000,-
150 x 100	6"	4"	5	Rp. 158.200,-
150	6"		4	Rp. 233.600,-
200 x 100	8"	4"	3	Rp. 346.200,-
200 x 150	8"	6"	2	Rp. 386.800,-

### INCREASER ( D - IN )



mm	DN		ISI / BOX	HARGA / PCS
	inch			
40 x 35	1½"	1¼"	90	Rp. 4.000,-
50 x 35	2"	1¼"	90	Rp. 5.000,-
50 x 40	2"	1½"	75	Rp. 5.200,-
65 x 40	2½"	1½"	45	Rp. 8.100,-
65 x 50	2½"	2"	45	Rp. 8.500,-
75 x 35	3"	1¼"	32	Rp. 7.300,-
75 x 40	3"	1½"	32	Rp. 10.200,-
75 x 50	3"	2"	32	Rp. 10.900,-
75 x 65	3"	2½"	28	Rp. 11.000,-
100 x 50	4"	2"	40	Rp. 18.300,-
100 x 65	4"	2½"	40	Rp. 20.300,-
100 x 75	4"	3"	35	Rp. 21.400,-
125 x 75	5"	3"	25	Rp. 38.000,-
125 x 100	5"	4"	20	Rp. 40.200,-
150 x 75	6"	3"	12	Rp. 59.100,-
150 x 100	6"	4"	10	Rp. 59.900,-
150 x 125	6"	5"	10	Rp. 76.300,-
200 x 100	8"	4"	8	Rp. 128.100,-
200 x 150	8"	6"	4	Rp. 132.800,-

### LARGE RADIUS ELBOW ( D - LL )



mm	DN		ISI / BOX	HARGA / PCS
	inch			
35	1¼"		60	Rp. 6.200,-
40	1½"		40	Rp. 9.300,-
50	2"		20	Rp. 13.300,-
65	2½"		30	Rp. 19.600,-
75	3"		18	Rp. 30.000,-
100	4"		8	Rp. 62.400,-
125	5"		5	Rp. 112.700,-
150	6"		6	Rp. 187.500,-

### LARGE RADIUS DOUBLE TEE ( D - WLT )



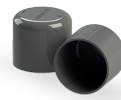
mm	DN		ISI / BOX	HARGA / PCS
	inch			
50	2"		10	Rp. 22.900,-
75 x 50	3"	2"	15	Rp. 34.000,-
100	4"		8	Rp. 116.500,-

### Y - BRANCH ( D - Y )



mm	DN		ISI / BOX	HARGA / PCS
	inch			
40 x 35	1½"	1¼"	40	Rp. 8.900,-
40	1½"		30	Rp. 10.500,-
50 x 35	2"	1¼"	24	Rp. 10.600,-
50	2"		18	Rp. 16.400,-
65 x 50	2½"	2"	27	Rp. 19.800,-
65	2½"		25	Rp. 22.800,-
75 x 50	3"	2"	20	Rp. 28.800,-
75	3"		15	Rp. 35.200,-
100 x 50	4"	2"	15	Rp. 44.900,-
100 x 75	4"	3"	8	Rp. 63.100,-
100	4"		6	Rp. 73.300,-
125 x 100	5"	4"	9	Rp. 105.800,-
150 x 75	6"	3"	8	Rp. 154.300,-
150 x 100	6"	4"	5	Rp. 183.900,-
150	6"		6	Rp. 228.700,-
200 x 100	8"	4"	3	Rp. 364.400,-
200 x 150	8"	6"	2	Rp. 429.300,-

### CAP ( D )



mm	DN		ISI / BOX	HARGA / PCS
	inch			
35	1¼"		144	Rp. 4.500,-
40	1½"		84	Rp. 6.200,-
50	2"		54	Rp. 8.500,-
65	2½"		38	Rp. 10.700,-
75	3"		60	Rp. 13.300,-
100	4"		30	Rp. 25.000,-

### 45° ELBOW ( D - 45 L )



mm	DN		ISI / BOX	HARGA / PCS
	inch			
35	1¼"		100	Rp. 3.700,-
40	1½"		75	Rp. 4.300,-
50	2"		100	Rp. 8.500,-
65	2½"		60	Rp. 11.500,-
75	3"		35	Rp. 18.600,-
100	4"		15	Rp. 31.600,-
125	5"		15	Rp. 60.200,-
150	6"		10	Rp. 116.500,-
200	8"		4	Rp. 257.100,-
250	10"		2	Rp. 357.900,-
300	12"		1	Rp. 562.500,-

### TEE ( D - DT )



mm	DN		ISI / BOX	HARGA / PCS
	inch			
35	1¼"		55	Rp. 5.200,-
40	1½"		40	Rp. 7.300,-
50	2"		65	Rp. 10.900,-
65 x 40	2½"	1½"	16	Rp. 13.900,-
65 x 50	2½"	2"	45	Rp. 16.900,-
65	2½"		32	Rp. 19.500,-
75 x 40	3"	1½"	36	Rp. 19.500,-
75 x 50	3"	2"	30	Rp. 22.500,-
75 x 65	3"	2½"	22	Rp. 25.000,-
75	3"		20	Rp. 29.200,-
100 x 40	4"	1½"	18	Rp. 35.000,-
100 x 50	4"	2"	15	Rp. 37.200,-
100 x 75	4"	3"	12	Rp. 43.700,-
100	4"		8	Rp. 50.000,-
125 x 75	5"	3"	8	Rp. 71.100,-
125 x 100	5"	4"	6	Rp. 84.700,-
125	5"		10	Rp. 88.600,-
150 x 100	6"	4"	8	Rp. 119.500,-
150	6"		6	Rp. 152.600,-
200 x 100	8"	4"	4	Rp. 162.300,-
200	8"		2	Rp. 316.900,-
250 x 200	10"	8"	2	Rp. 512.300,-

### CLEAN OUT CAP ( D - CO )



mm	DN		ISI / BOX	HARGA / PCS
	inch			
100	4"		27	Rp. 34.700,-

DN: Diameter Nominal