



PRODUCT
CATALOG
2024



AMD FITTING
PP COMPRESSION



TENTANG KAMI

PT. GOLDEN PIPING INDONESIA

PT. GPI Sejak Tahun 2000, merupakan perusahaan yang terlengkap dalam menyediakan produk dan solusi sistem perpipaan, untuk berbagai kebutuhan pada jaringan air bersih, air buangan, air panas, pendingin udara, irigasi, hydrant, dewatering, pelindung kabel, gas dan instalasi lainnya, yang banyak digunakan pada bidang Infrastruktur PUPR, PDAM, Utilitas, Pertambangan, Industri, Pertambangan, Perkebunan, Taman, Pertanian, Perumahan, Gedung, Telekom, Electrical dan Gas.

Produk kami diantaranya Pipa HDPE, PVC, PPR, Steel, PE Multilayer, PE Corrugated, Fitting, Mesin & Tool, Valve, Aksesories, dan Instalasi. Kami selalu berinovasi mengembangkan produk dengan teknologi terkini sehingga lebih berkualitas, efisien, dan optimal.

Visi

Menjadi Perusahaan Terbesar, Terbaik, Terinovatif dan Terlengkap dibidang Perpipaan di Indonesia

Misi

- Menyediakan Produk berkualitas dan bergaransi.
- Menyediakan solusi lengkap dibidang perpipaan.
- Memberikan dukungan teknis produk dan pemasangan.
- Berinovasi dengan teknologi terbaru sehingga lebih optimal.
- Memberikan Pelayanan, Kemudahan, Pengiriman dan harga terbaik.

200+

Karyawan

10.000+

Konsumen

15.000+

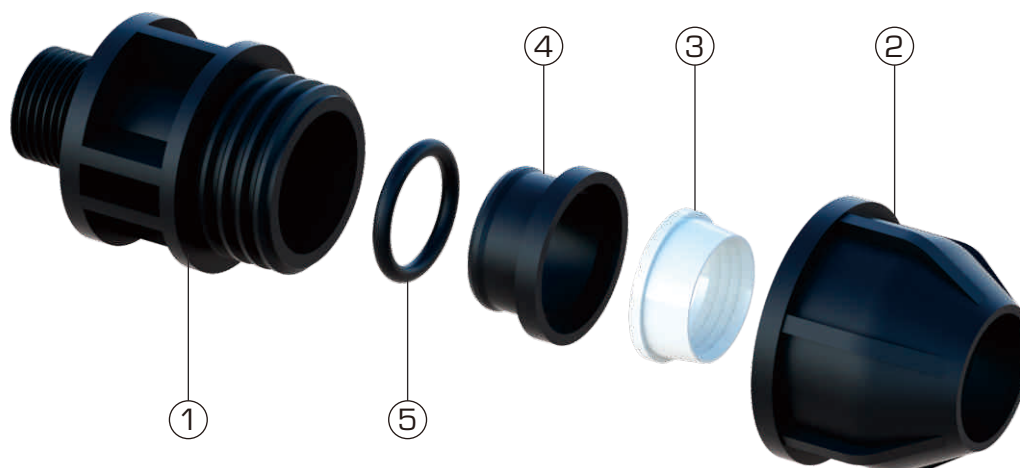
Produk

22.000 m²

Area

PP Compression Fittings for PE pressure piping applications, fast and reliable connections. Split ring opening has been optimized to make pipe insertion even easier. Inner nerves prevent the pipe from turning during installation. Perfect sealing in all conditions when tightened and due to seat inclination, o-ring makes pressure againsts the pipe, providing superior watertightness. Extensively used worldwide. Approved for use with portable water.

TECHNICAL DATE



No.	Part	Material
1	Body	[PPB] Polypropylene [PP-B] of eceptional mechanical properties even at high pressure
2	Nut	[PPB] Polypropylene with dye master of high stability to UV rays and solidity to heat
3	Clinching Ring	[POM] Polyacetal resin [POM] of high mechanical resistance and hardness
4	Blocking Bush	[PPB] Polypropylene
5	O-Ring Gasket	[NBR] Special elastomeric acrylonitrile rubber [NBR] for alimentary use

Reference Standards

Operator Pressure :

UNI 9561:2006; DIN 8076:2007; ISO 14236:2000; GW 335-B3:2011; SANS 14236:2003; AS/NZS 4129:2008

Polyethylene pipes : UNI 7990:2004; UNI EN 12201-2:2004; DIN 8074:1999

Fittings : DM 174 06/04/2004; BS 6920:2000:W270:KTV

Threads : ISO 7-1:2007; UNI EN 10226-1:2006; UNI EN ISO 228-1:2003; ANSI ASME B1.20.1:1983

Flanges : UNI EN 1092-1:2007; ISO 7005-1:2011

MM	PN
20 - 63	16
75 - 110	10

Maximum Allowable Working Pressure Related to the Duration of Pressure & Temperature :

Temperature [°C]	-10 to 25	+25 to +35	+36 to +45
PN	16	12.5	10
PN	10	8	6



Coupler

1



Elbow 90°

2



Tee

3



Female Threaded Adaptor

4



Male Threaded Adaptor

5



Female Threaded Elbow 90°

6



Male Threaded Elbow 90°

7



Reducer Coupler

8



Reducing Tee

9



Female Threaded Tee

10



Male Threaded Tee

11



End Cap

12



Ball Valve

13



Ball Valve F/F

14



Ball Valve Female Union

15



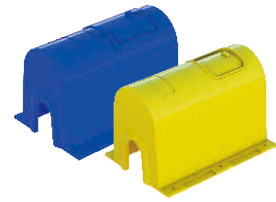
Ball Valve Male Union

16



Flange Adaptor

17



Water Meter Box

18



Circular Valve Box

19



Standar Valve Box

20



Clamp Saddle

21



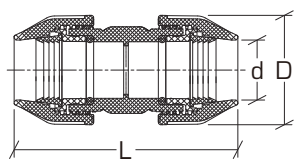
Ferrule Cutter

22



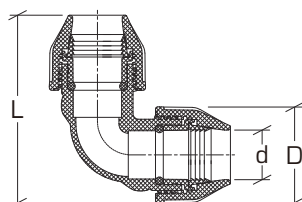
Coupling Saddle

23



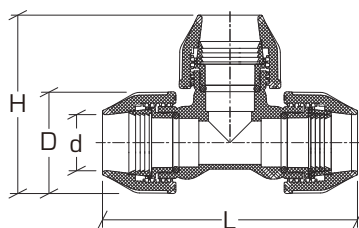
- Body, Nut, Bushing Polypropylene (PP-B)
- O-Ring Gasket (NBR)
- Clinching Ring (POM)
- PN 16 (20-63), PN 10 (75-110)
- ISO 14236.2000

DN	D	d	L	Box	Kg	CODE
20	44	21	100	160	0.075	ACPPC20
25	56	26	130	100	0.110	ACPPC25
32	65	33	150	70	0.157	ACPPC32
40	80	41	195	40	0.300	ACPPC40
50	92	51	218	22	0.500	ACPPC50
63	114	64	235	16	0.833	ACPPC63
75	128	76	280	8	1.000	ACPPC75
90	152	91	315	6	1.667	ACPPC90
110	182	111	360	4	2.750	ACPPC110



- Body, Nut, Bushing Polypropylene (PP-B)
- O-Ring Gasket (NBR)
- Clinching Ring (POM)
- PN 16 (20-63), PN 10 (75-110)
- ISO 14236.2000

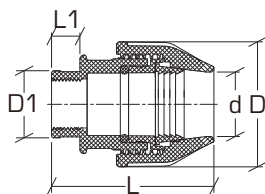
DN	D	d	L	Box	Kg	CODE
20	44	21	76	180	0.075	ALPPC20
25	56	26	96	100	0.125	ALPPC25
32	65	33	116	60	0.167	ALPPC32
40	80	41	145	36	0.306	ALPPC40
50	92	51	165	18	0.556	ALPPC50
63	114	64	195	12	0.917	ALPPC63
75	128	76	231	6	1.167	ALPPC75
90	152	91	267	5	2.000	ALPPC90
110	182	111	315	4	3.250	ALPPC110



- Body, Nut, Bushing Polypropylene (PP-B)
- O-Ring Gasket (NBR)
- Clinching Ring (POM)
- PN 16 (20-63), PN 10 (75-110)
- ISO 14236.2000

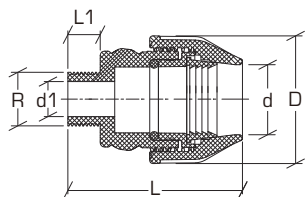
DN	D	d	L	BOX	Kg	CODE
20	44	21	100	180	0.110	ATPPC20
25	56	26	130	100	0.200	ATPPT25
32	65	33	150	60	0.257	ATPPT32
40	80	41	195	36	0.545	ATPPT40
50	92	51	218	18	0.833	ATPPT50
63	114	64	235	12	1.364	ATPPT63
75	128	76	280	6	1.833	ATPPT75
90	152	91	315	5	2.750	ATPPT90
110	182	111	360	4	4.500	ATPPT110

04 Female Threaded Adaptor



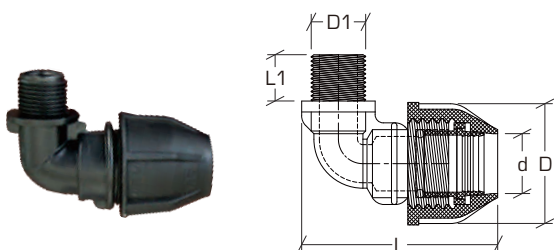
- Body, Nut, Bushing Polypropylene (PP-B)
- O-Ring Gasket (NBR)
- Clinching Ring (POM)
- PN 16 (20-63), PN 10 (75-110)
- ISO 14236.2000

DN	D	D1	d	L	L1	BOX	Kg	CODE
20x1/2"	44	31.6	31.6	75	16	220	0.055	AFAPPC20X1/2
20x3/4"	44	38.6	38.6	78	19	220	0.059	AFAPPC20X3/4
25x1/2"	56	31.6	31.6	92	16	150	0.080	AFAPPC25X1/2
25x3/4"	56	38.6	38.6	95	19	150	0.080	AFAPPC25X3/4
25x1"	56	47.4	47.4	98	22	150	0.080	AFAPPC25X1
32x3/4"	65	38.6	38.6	106	19	100	0.110	AFAPPC32X3/4
32x1"	65	47.4	47.4	110	22	100	0.120	AFAPPC32X1
40x1"	80	47.4	47.4	132	22	55	0.200	AFAPPC40X1
40x1-1/4"	80	62	62	137	24	55	0.200	AFAPPC40X1-1/4
50x1-1/2"	92	67	67	151	24	35	0.286	AFAPPC50X1-1/2
63x2"	114	81.2	81.2	165	28	22	0.500	AFAPPC63X2
75x2-1/2"	128	105	105	193	33	-	-	AFAPPC63X2-1/2
90x3"	152	126	126	214	35	-	-	AFAPPC90X3
110x4"	182	157	157	240	40	-	-	AFAPPC110X4



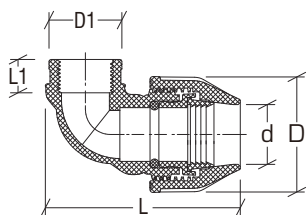
- Body, Nut, Bushing Polypropylene (PP-B)
- O-Ring Gasket (NBR)
- Clinching Ring (POM)
- PN 16 (20-63), PN 10 (75-110)
- ISO 14236.2000

DN	D	d	d1	L	L1	BOX	Kg	CODE
20x1/2"	44	21	14	75	14	240	0.046	AMAPPC20X1/2
20x3/4"	44	21	17.5	75	16	240	0.050	AMAPPC20X3/4
25x1/2"	56	26	14	92	14	150	0.068	AMAPPC25X1/2
25x3/4"	56	26	17.5	92	16	150	0.071	AMAPPC25X3/4
25x1"	56	26	23	92	19	150	0.071	AMAPPC25X1
32x3/4"	65	33	17.5	104	16	100	0.094	AMAPPC32X3/4
32x1"	65	33	23	104	19	100	0.094	AMAPPC32X1
32x1-1/4"	65	33	31.5	104	21	100	0.096	AMAPPC32X1-1/4
40x1"	80	41	23	135	21	65	0.158	AMAPPC40X1
40x1-1/4"	80	41	31.5	135	21	65	0.160	AMAPPC40X1-1/4
50x1-1/2"	92	51	32	148	21	36	0.311	AMAPPC50X1-1/2
50x2"	92	51	42	148	26	36	0.308	AMAPPC50X2
63x1-1/2"	114	64	32	158	21	20	0.450	AMAPPC63X1-1/2
63x2"	114	64	42	158	26	20	0.450	AMAPPC63X2
63x2-1/2"	114	64	60	158	30	22	0.450	AMAPPC63X2-1/2
75x2-1/2"	128	76	60	186	30	16	0.575	AMAPPC75X2-1/2
90x3"	152	91	67	205	33	8	1.000	AMAPPC90X3
110x4"	182	111	92	226	38	8	1.625	AMAPPC110X4



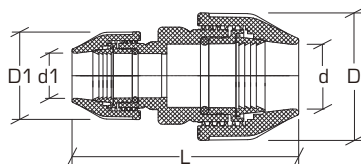
- Body, Nut, Bushing Polypropylene (PP-B)
- O-Ring Gasket (NBR)
- Clinching Ring (POM)
- PN 16 (20-63), PN 10 (75-110)
- ISO 14236.2000

DN	D	D1	L	L1	BOX	Kg	CODE
20x1/2"	44	14	83	14	240	0.050	AMLPPC20X1/2
20x3/4"	44	17.5	85	16	240	0.054	AMLPPC20X3/4
25x1/2"	56	14	98	14	140	0.071	AMLPPC25X1/2
25x3/4"	56	17.5	100	16	140	0.079	AMLPPC25X3/4
32x3/4"	65	17.5	110	16	80	0.113	AMLPPC32X3/4
32x1"	65	23	114	19	80	0.113	AMLPPC32X1
40x1"	80	23	132	19	50	0.220	AMLPPC40X1
40x1-1/4"	80	31.5	132	21	50	0.200	AMLPPC40X1-1/4
50x1-1/4"	92	31.5	160	21	28	0.357	AMLPPC50X1-1/4
50x1-1/2"	92	32	160	21	28	0.357	AMLPPC50X1-1/2
63x1-1/2"	114	32	185	21	16	0.625	AMLPPC63X1-1/2
63x2"	114	42	190	26	16	0.625	AMLPPC63X2
75x2-1/2"	128	60	230	30	-	-	AMLPPC75X1-1/2
90x3"	152	67	260	33	-	-	AMLPPC90X3
110x4"	182	92	300	38	-	-	AMLPPC110X4



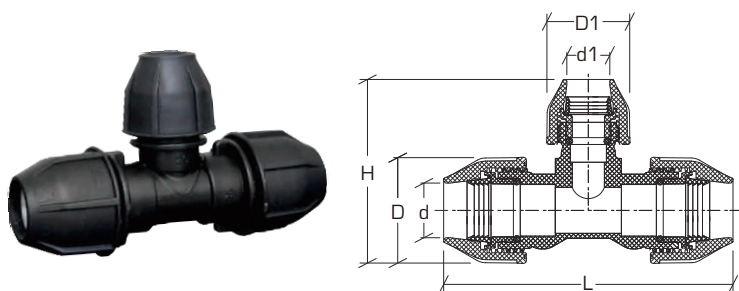
- Body, Nut, Bushing Polypropylene (PP-B)
- O-Ring Gasket (NBR)
- Clinching Ring (POM)
- PN 16 (20-63), PN 10 (75-110)
- ISO 14236.2000

DN	D	D1	d	L	L1	BOX	Kg	CODE
20x1/2"	44	31.6	21	83	14	220	0.059	AFLPPC20X1/2
20x3/4"	44	38.6	21	85	16	220	0.059	AFLPPC20X3/4
25x1/2"	56	31.6	26	98	14	140	0.079	AFLPPC25X1/2
25x3/4"	56	38.6	26	100	16	140	0.086	AFLPPC25X3/4
32x3/4"	65	38.6	33	110	16	80	0.125	AFLPPC32X3/4
32x1"	65	47.4	33	114	19	80	0.125	AFLPPC32X1
40x1"	80	38.6	41	132	19	40	0.225	AFLPPC40X1
40x1-1/4"	80	47.4	41	132	21	40	0.225	AFLPPC40X1-1/4
50x1-1/4"	92	47.4	51	160	21	28	0.429	AFLPPC50X1-1/2
50x1-1/2"	92	62	51	160	21	-	-	AFLPPC50X2
63x1-1/2"	114	67	64	185	21	-	-	AFLPPC63X1-1/2
63x2"	114	81.2	64	190	26	14	0.714	AFLPPC63X2
75x2-1/2"	128	105	76	230	30	-	-	AFLPPC75X1-1/2
90x3"	152	126	91	260	33	-	-	AFLPPC90X3
110x4"	182	157	111	300	38	-	-	AFLPPC110X4



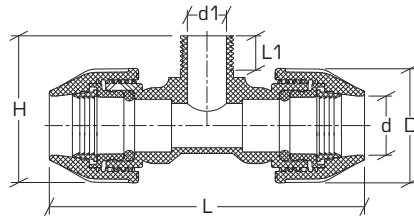
- Body, Nut, Bushing Polypropylene (PP-B)
- O-Ring Gasket (NBR)
- Clinching Ring (POM)
- PN 16 (20-63), PN 10 (75-110)
- ISO 14236.2000

DN	D	D1	d	d1	L	BOX	Kg	CODE
25x20	56	44	26	21	117	100	0.100	ARCPPC25X20
32x20	65	44	33	21	129	80	0.125	ARCPPC32X20
32x25	65	56	33	26	143	70	0.157	ARCPPC32X25
40x20	80	44	41	21	163	60	0.233	ARCPPC40X20
40x25	80	56	41	26	168	55	0.236	ARCPPC40X25
40x32	80	65	41	33	174	50	0.240	ARCPPC40X32
50x25	92	56	51	26	180	36	0.417	ARCPPC50X25
50x32	92	62	51	33	188	36	0.417	ARCPPC50X32
50x40	92	80	51	41	207	34	0.412	ARCPPC50X40
63x40	114	80	64	41	214	15	0.667	ARCPPC63X40
63x50	114	92	64	51	227	15	0.667	ARCPPC63X50
75x50	128	92	76	51	251	-	-	ARCPPC75X50
75x63	128	114	76	64	256	-	-	ARCPPC75X63
90x63	152	114	91	64	275	-	-	ARCPPC90X63
90x75	152	128	91	76	295	-	-	ARCPPC90X75
110x63	182	114	111	64	340	-	-	ARCPPC110X63
110x90	182	152	111	91	350	-	-	ARCPPC110X90



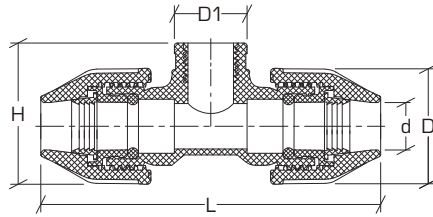
- Body, Nut, Bushing Polypropylene (PP-B)
- O-Ring Gasket (NBR)
- Clinching Ring (POM)
- PN 16 (20-63), PN 10 (75-110)
- ISO 14236.2000

DN	D	D1	d	d1	L	BOX	Kg	CODE
25x20x25	56	44	26	21	158	60	0.217	ARTPPC25x20x25
32x20x32	65	44	33	21	181	35	0.229	ARTPPC32x20x32
32x25x32	65	56	33	26	189	35	0.229	ARTPPC32x25x32
40x25x40	80	56	41	26	228	28	0.393	ARTPPC40x25x40
40x32x40	80	65	41	33	239	28	0.393	ARTPPC40x32x40
50x25x50	92	56	51	26	254	-	-	ARTPPC50x25x50
50x32x50	92	80	51	33	262	-	-	ARTPPC50x32x50
50x40x50	92	80	51	41	265	12	0.750	ARTPPC50x40x50
63x50x63	114	92	64	51	303	8	1.250	ARTPPC63x50x63
75x63x75	128	114	76	64	365	-	-	ARTPPC75x63x75
90x63x90	152	114	91	64	420	-	-	ARTPPC90x63x90
90x75x90	152	128	91	76	420	-	-	ARTPPC90x75x90
110x90x110	182	152	111	91	486	-	-	ARTPPC110x90x110



- Body, Nut, Bushing Polypropylene (PP-B)
- O-Ring Gasket (NBR)
- Clinching Ring (POM)
- PN 16 (20-63), PN 10 (75-110)
- ISO 14236.2000

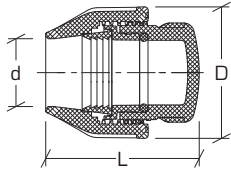
DN	D	d	d1	L	L1	BOX	Kg	CODE
20x1/2"	44	21	14	125	14	120	68	AMTPPC20x1/2
20x3/4"	44	21	17.5	125	16	120	70	AMTPPC20x3/4
25x1/2"	56	26	14	158	14	70	78	AMTPPC25x1/2
25x3/4"	56	26	17.5	158	16	70	78	AMTPPC25x3/4
25x1"	56	26	23	158	19	70	78	AMTPPC25x1
32x3/4"	65	33	17.5	189	16	40	91	AMTPPC32x3/4
32x1"	65	33	23	189	19	40	93	AMTPPC32x1
40x1-1/4"	80	41	31.5	239	21	32	100	AMTPPC40x1-1/4
50x1-1/2"	92	51	32	262	21	15	125	AMTPPC50x1-1/2
63x1-1/2"	114	64	32	303	21	12	150	AMTPPC63x1-1/2
63x2"	114	64	42	303	26	12	150	AMTPPC63x2
75x2-1/2"	128	76	60	365	30	-	162	AMTPPC75x2-1/2
90x3"	152	91	67	420	33	-	175	AMTPPC90x3
110x4"	182	111	92	482	38	-	225	AMTPPC110x4



- Body, Nut, Bushing Polypropylene (PP-B)
- O-Ring Gasket (NBR)
- Clinching Ring (POM)
- PN 16 (20-63), PN 10 (75-110)
- ISO 14236.2000

DN	D	D1	d	L	L1	BOX	Kg	CODE
20x1/2"	44	31.6	21	125	16	120	0.092	AFTPPC20x1/2
20x3/4"	44	38.6	21	125	19	110	0.100	AFTPPC20x3/4
25x1/2"	56	31.6	26	158	16	80	0.138	AFTPPC25x1/2
25x3/4"	56	38.6	26	158	19	70	0.143	AFTPPC25x3/4
32x3/4"	65	38.6	33	189	19	40	0.225	AFTPPC32x3/4
32x1"	65	47.4	33	189	22	40	0.225	AFTPPC32x1
40x1-1/4"	80	62	41	239	24	24	0.375	AFTPPC40x1-1/4
50x1-1/2"	92	67	51	262	24	15	0.600	AFTPPC50x1-1/2
63x1-1/2"	114	67	64	303	24	12	1.000	AFTPPC63x1-1/2
63x2"	114	81.2	64	303	28	12	1.000	AFTPPC63x2
75x2-1/2"	128	105	76	365	33	-	-	AFTPPC75x2-1/2
90x3"	152	126	91	420	35	-	-	AFTPPC90x3
110x4"	182	157	111	482	40	-	-	AFTPPC110x4

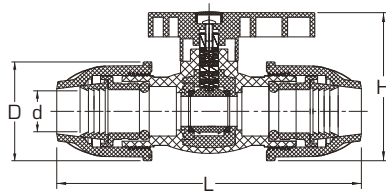
12 End Cap



- Body, Nut, Bushing Polypropylene (PP-B)
- O-Ring Gasket (NBR)
- Clinching Ring (POM)
- PN 16 (20-63), PN 10 (75-110),
- ISO 14236.2000

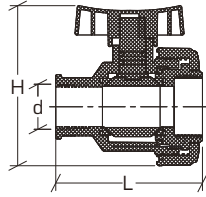
DN	D	d	L	BOX	Kg	CODE
20	44	21	59	260	0.050	AECPPC20
25	56	26	76	150	0.073	AECPPC25
32	65	33	88	120	0.092	AECPPC32
40	80	41	113	65	0.154	AECPPC40
50	92	51	127	40	0.275	AECPPC50
63	114	64	137	32	0.469	AECPPC63
75	128	76	160	16	0.625	AECPPC75
90	152	91	185	12	1.000	AECPPC90
110	182	111	205	8	1.625	AECPPC110

13 Ball Valve



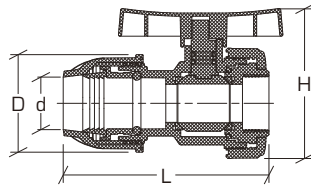
- Body, Nut, Bushing Polypropylene (PP-B)
- O-Ring Gasket (NBR)
- Clinching Ring (POM)
- PN 16 (20-63), PN 10 (75-110),
- ISO 14236.2000

DN	D	d	L	BOX	Kg	CODE
20	44	21	59	260	0.050	ABVPPC20
25	56	26	76	150	0.073	ABVPPC25
32	65	33	88	120	0.092	ABVPPC32
40	80	41	113	65	0.154	ABVPPC40
50	92	51	127	40	0.275	ABVPPC50
63	114	64	137	32	0.469	ABVPPC63



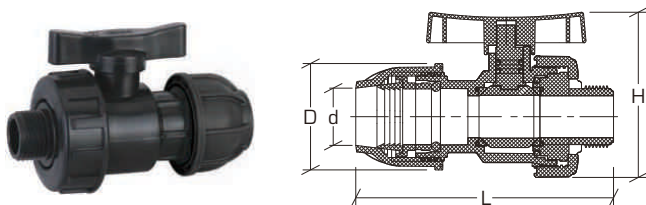
- Body, Nut, Bushing Polypropylene (PP-B)
- O-Ring Gasket (NBR)
- Clinching Ring (POM)
- PN 16 (20-63), PN 10 (75-110)
- ISO 14236.2000

DN	d	L	H	BOX	Kg	CODE
1/2"	21	150	65	180	0.237	AFBVPP1/2
3/4"	26	165	70	120	0.593	AFBVPP3/4
1"	33	195	90	80	1.263	AFBVPP1
1-1/4"	41	230	100	60	2.465	AFBVPP1-1/4
1-1/4"	51	260	125	36	7.838	AFBVPP1-1/4
2"	64	305	150	19	21.111	AFBVPP2



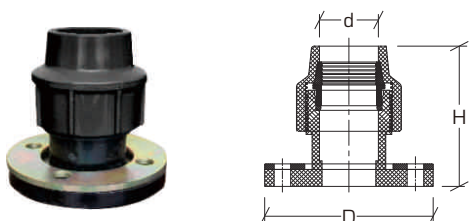
- Body, Nut, Bushing Polypropylene (PP-B)
- O-Ring Gasket (NBR)
- Clinching Ring (POM)
- PN 16 (20-63), PN 10 (75-110)
- ISO 14236.2000

DN	D	d	L	H	BOX	Kg	CODE
1/2"	44	21	150	65	200	0.431	AFBVPPC1/2
3/4"	56	26	165	70	120	1.164	AFBVPPC3/4
1"	65	33	195	90	80	2.565	AFBVPPC1
1-1/4"	80	41	230	100	60	4.558	AFBVPPC1-1/4
1-1/4"	92	51	260	125	36	13.144	AFBVPPC1-1/4
2"	114	64	305	150	19	42.153	AFBVPPC2



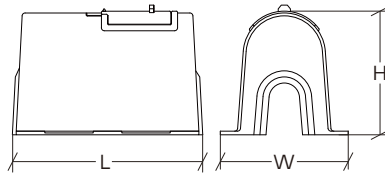
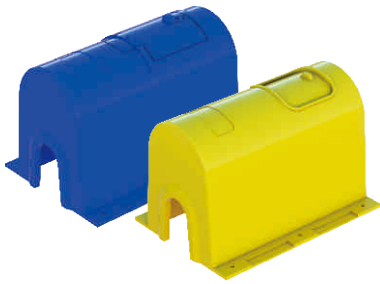
- Body, Nut, Bushing Polypropylene (PP-B)
- O-Ring Gasket (NBR)
- Clinching Ring (POM)
- PN 16 (20-63), PN 10 (75-110)
- ISO 14236.2000

DN	D	d	L	H	BOX	Kg	CODE
20x1/2"	44	21	150	65	180	0.495	AMBVPPC20x1/2
25x3/4"	56	26	165	70	120	1.202	AMBVPPC25x3/4
32x1"	65	33	195	90	80	2.698	AMBVPPC32x1
40x1-1/4"	80	41	230	100	60	4.827	AMBVPPC40x1-1/4
50x1-1/2"	92	51	260	125	36	13.808	AMBVPPC50x1-1/2
63x2"	114	64	305	150	19	43.300	AMBVPPC63x2



- Body, Nut, Bushing Polypropylene (PP-B)
- O-Ring Gasket (NBR)
- Clinching Ring (POM)
- PN 16 (20-63), PN 10 (75-110),
- ISO 14236.2000

DN	D	d	L	BOX	Kg	CODE
20	44	21	59	260	0.050	AFLAPPC20
25	56	26	76	150	0.073	AFLAPPC25
32	65	33	88	120	0.092	AFLAPPC32
40	80	41	113	65	0.154	AFLAPPC40
50	92	51	127	40	0.275	AFLAPPC50
63	114	64	137	32	0.469	AFLAPPC63
75	128	76	160	16	0.625	AFLAPPC75
90	152	91	185	12	1.000	AFLAPPC90
110	182	111	205	8	1.625	AFLAPPC110



- Body, Nut, Bushing Polypropylene (PP-B)
- O-Ring Gasket (NBR)
- Clinching Ring (POM)
- PN 16 (20-63), PN 10 (75-110)
- ISO 14236.2000

L	H	W	Code
313	210	200	WMB

19

Circular Valve Box



6" Circular Valve Box
 Size : 205*230*160
 Working Pressure : 2405 kn/m



10" Circular Valve Box
 Size : 340*260*254
 Working Pressure : 10395 kn/m

20

Standar Valve Box



12" Standard Valve Box
 Size : 530*400*315
 Working Pressure : 6630 kn/m



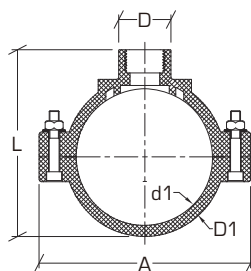
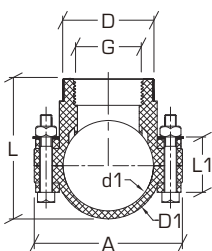
14" Standard Jumbo Valve Box
 Size : 675*495*315
 Working Pressure : 5570 kn/m



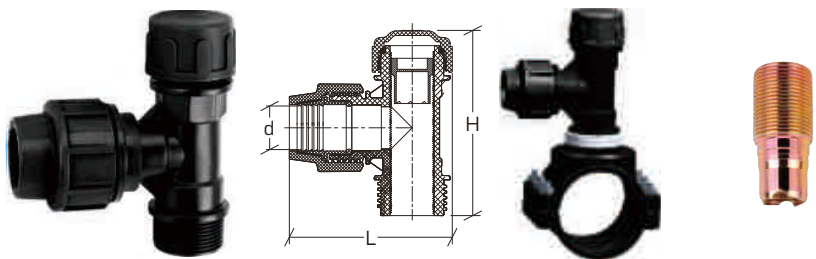
- Body, Nut, Bushing Polypropylene (PP-B)
- O-Ring Gasket (NBR)
- Clinching Ring (POM)
- PN 16 [20-63], PN 10 [75-110]
- ISO 14236.2000



Option 

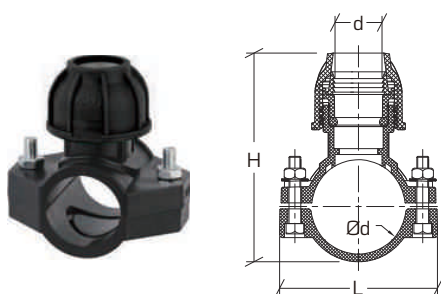


DN	A	D	D1	d1	L	L1	h	BOX	Kg	CODE
20x1/2"	76	30.6	34	25	49	26	17.5	240	0.071	ACSPP20x1/2
25x3/4"	76	37.3	34	25	51	26	20	-	-	ACSPP25x3/4
32x1/2"	78	30.6	41	32	62	27	17.5	160	0.106	ACSPP32x1/2
32x3/4"	78	37.3	41	32	62	27	20	160	0.106	ACSPP32x3/4
32x1"	78	45.1	41	32	62	27	24	160	0.106	ACSPP32x1
40x1/2"	85	30.6	50	40	71	32	17.5	150	0.080	ACSPP40x1/2
40x3/4"	85	37.3	50	40	71	32	20	150	0.080	ACSPP40x3/4
40x1"	85	45.1	50	40	71	32	24	150	0.080	ACSPP40x1
50x1/2"	85.5	30.6	60	50	79	34	17.5	110	0.091	ACSPP50x1/2
50x3/4"	85.5	37.3	60	50	79	34	20	110	0.091	ACSPP50x3/4
50x1"	85.5	45.1	60	50	79	34	24	110	0.091	ACSPP50x1
63x1/2"	100	30.6	74.2	63	98	36	17.5	70	0.186	ACSPP63x1/2
63x3/4"	100	37.3	74.2	63	98	36	20	70	0.186	ACSPP63x3/4
63x1"	100	45.1	74.2	63	98	36	24	70	0.186	ACSPP63x1
75x1/2"	117.6	30.6	89	75	109	45	17.5	60	0.217	ACSPP75x1/2
75x3/4"	117.6	37.3	89	75	109	45	20	60	0.217	ACSPP75x3/4
75x1"	117.6	45.1	89	75	109	45	24	60	0.217	ACSPP75x1
90x1/2"	138	30.6	105	90	125	46	17.5	50	0.300	ACSPP90x1/2
90x3/4"	138	37.3	105	90	125	46	20	50	0.300	ACSPP90x3/4
90x1"	138	45.1	105	90	125	46	24	50	0.300	ACSPP90x1
90x1-1/4"	138	54	105	90	125	46	29	48	0.313	ACSPP90x1-1/4
90x1-1/2"	138	61.1	105	90	125	46	29	48	0.313	ACSPP90x1-1/2
90x2"	138	71.9	105	90	125	46	29	48	0.313	ACSPP90x2
110x1/2"	158	30.6	126.4	110	147	47.2	17.5	40	0.375	ACSPP110x1/2
110x3/4"	158	37.3	126.4	110	147	47.2	20	40	0.375	ACSPP110x3/4
110x1"	158	45.1	126.4	110	147	47.2	24	40	0.375	ACSPP110x1
110x1-1/4"	158	54	126.4	110	147	47.2	29	40	0.375	ACSPP110x1-1/4
110x1-1/2"	158	61.1	126.4	110	147	47.2	29	40	0.375	ACSPP110x1-1/2
110x2"	158	71.9	126.4	110	147	47.2	29	40	0.375	ACSPP110x2
160x1/2"	211	30.6	181	160	207	51	17.5	15	1.000	ACSPP160x1/2
160x3/4"	211	37.3	181	160	207	51	20	15	1.000	ACSPP160x3/4
160x1"	211	45.1	181	160	207	51	24	15	1.000	ACSPP160x1
160x1-1/4"	211	54	181	160	207	51	29	15	1.000	ACSPP160x1-1/4
160x1-1/2"	211	61.1	181	160	207	51	29	15	1.000	ACSPP160x1-1/2
160x2"	211	71.9	181	160	207	51	29	15	1.000	ACSPP160x2
160x3"	211	102	181	160	207	51	35	15	1.000	ACSPP160x3
200x1/2"	222.6	30.6	222.6	200	254	57.6	17.5	8	1.500	ACSPP200x1/2
200x3/4"	222.6	37.3	222.6	200	254	57.6	20	8	1.500	ACSPP200x3/4
200x1"	222.6	45.1	222.6	200	254	57.6	24	8	1.500	ACSPP200x1
200x1-1/4"	222.6	54	222.6	200	254	57.6	29	8	1.500	ACSPP200x1-1/4
200x1-1/2"	222.6	61.1	222.6	200	254	57.6	29	8	1.500	ACSPP200x1-1/2
200x2"	222.6	102	222.6	200	254	57.6	29	8	1.500	ACSPP200x2
200x3"	222.6	129	222.6	200	254	57.6	35	8	1.500	ACSPP200x3



- Body, Nut, Bushing Polypropylene (PP-B)
- O-Ring Gasket (NBR)
- Clinching Ring (POM)
- PN 16 (20-63), PN 10 (75-110)
- ISO 14236.2000

DN	D	L	H	BOX	Kg	CODE
20x1-1/4"	21	-	-	100	1.662	AFCPPC20x1-1/4
25x1-1/4"	26	-	-	100	1.815	AFCPPC25x1-1/4
32x1-1/4"	33	-	-	100	2.055	AFCPPC32x1-1/4



- Body, Nut, Bushing Polypropylene (PP-B)
- O-Ring Gasket (NBR)
- Clinching Ring (POM)
- PN 16 (20-63), PN 10 (75-110),
- ISO 14236.2000

DN	D	L	H	BOX	Kg	CODE
32x20	21	-	-	90	-	ACSPPC32x20
32x25	26	-	-	90	-	ACSPPC32x25
40x20	21	-	-	80	-	ACSPPC40x20
40x25	26	-	-	70	-	ACSPPC40x25
50x20	21	-	-	100	-	ACSPPC50x20
50x25	26	-	-	90	-	ACSPPC50x25
63x20	21	-	-	80	-	ACSPPC63x20
63x25	26	-	-	70	-	ACSPPC63x25
75x20	21	-	-	70	-	ACSPPC75x20
75x25	26	-	-	70	-	ACSPPC75x25
90x20	21	-	-	52	-	ACSPPC90x20
90x25	26	-	-	52	-	ACSPPC90x25
110X20	21	-	-	40	-	ACSPPC110X20
110X25	26	-	-	40	-	ACSPPC110X25



GoldenPiping^{ID}
2024

AMD