



Iron Pipe Fitting

SNI 0139:2008



Usage

JZ Iron Pipe Fitting is suitable to pipelines conveying less corrosive water, vapor, oil, gas and other liquid alike materials. It complies with Indonesian standard SNI 0139:2008.

Size

DN 10 mm – 150 mm (3/8" – 6"), with equal or varying diameter.

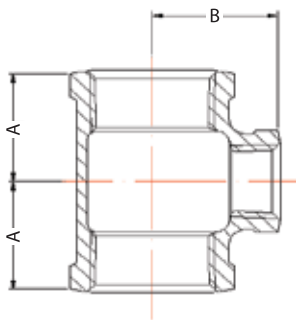
Mechanical Characteristic

Tensile Strength $\geq 33 \text{ kg/mm}^2$, elongation $\geq 8 \%$; hardness $\leq \text{HB } 150$.

Endurance

- Testing Pressure: 25 kg/cm^2 (=362 psi) for water leakage, 5 kg/cm^2 (72 psi) for air leakage
- Working Pressure: 16 kg/cm^2 (277psi)

Reducing Tee



Black



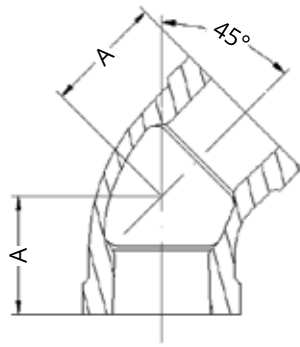
Galvanized

	SIZE	End to Center Length (mm)	
		A	B
1	3/4" x 1/2"	29	30
2	1" x 1/2"	32	33
3	1" x 3/4"	34	35
4	1 1/4" x 1/2"	34	38
5	1 1/4" x 3/4"	38	40
6	1 1/4" x 1"	40	42
7	1 1/2" x 1/2"	35	42
8	1 1/2" x 3/4"	38	43
9	1 1/2" x 1"	41	45
10	1 1/2" x 1 1/4"	45	48
11	2" x 1/2"	38	48
12	2" x 3/4"	41	49
13	2" x 1"	44	51
14	2" x 1 1/4"	48	54
15	2" x 1 1/2"	52	55
16	2 1/2" x 1 1/4"	52	62
17	2 1/2" x 1 1/2"	55	62
18	2 1/2" x 2"	60	65
19	3" x 1 1/2"	58	72
20	3" x 2"	62	72
21	3" x 2 1/2"	72	75
22	4" x 2"	69	87
23	4" x 2 1/2"	78	90
24	4" x 3"	83	91

Elbow 45°

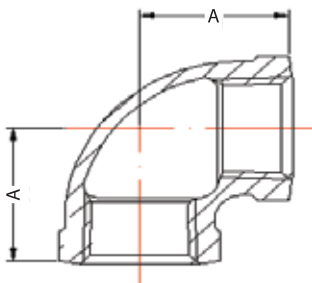


Galvanized



	SIZE	End to Center Length (mm) A
1	1½"	37
2	2"	42
3	2½"	49
4	3"	54
5	4"	65
6	6"	82

Elbow 90°



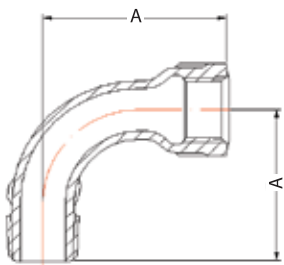
Galvanized



Black

	SIZE	End to Center Length (mm) A
1	3/8"	25
2	1/2"	28
3	3/4"	33
4	1"	38
5	1¼"	45
6	1½"	50
7	2"	58
8	2½"	69
9	3"	78
10	4"	96
11	6"	131

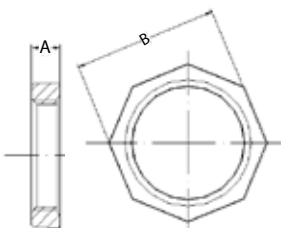
Long Elbow 90°



Galvanized

	SIZE	Length (mm) A
1	1/2"	52
2	3/4"	65

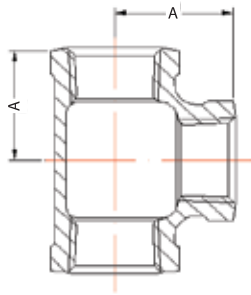
Backnut



Galvanized

	SIZE	Thickness (mm) A	Width (mm) B
1	3/4"	10	38

Tee



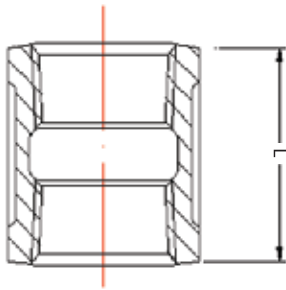
Galvanized



Black

	SIZE	End to Center Length (mm)
		A
1	3/8"	23
2	1/2"	27
3	3/4"	32
4	1"	38
5	1 1/4"	46
6	1 1/2"	48
7	2"	57
8	2 1/2"	69
9	3"	78
10	4"	97

Socket



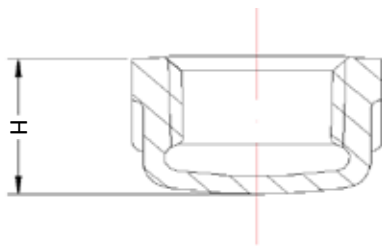
Galvanized



Black

	SIZE	End to End Length (mm)
		L
1	3/8"	30
2	1/2"	35
3	3/4"	40
4	1"	45
5	1 1/4"	50
6	1 1/2"	55
7	2"	60
8	2 1/2"	70
9	3"	75
10	4"	85
11	6"	105

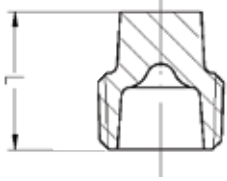
Cap



Galvanized

	SIZE	Height (mm)
		H
1	1/2"	20
2	3/4"	24
3	1"	28
4	1 1/4"	30
5	1 1/2"	32
6	2"	36
7	2 1/2"	42
8	3"	45
9	4"	55

Plug



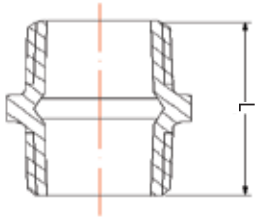
Galvanized



Black

	SIZE	End to End Length (mm)
		L
1	3/8"	15
2	1/2"	18
3	3/4"	20
4	1"	23
5	1 1/4"	29
6	1 1/2"	30
7	2"	36
8	2 1/2"	39
9	3"	44

Hex. Nipple



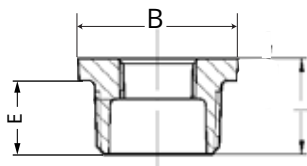
Galvanized



Black

	SIZE	End to End Length (mm)
		L
1	3/8"	38
2	1/2"	44
3	3/4"	47
4	1"	53
5	1 1/4"	57
6	1 1/2"	59
7	2"	68
8	2 1/2"	75
9	3"	83
10	4"	95

Bushing



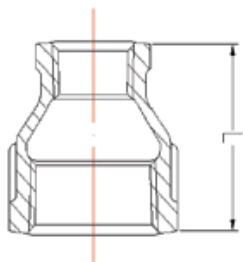
Galvanized



Black

	SIZE	Length (mm)	Width (mm)	Length (mm)
		L	B	E
1	3/8" x 1/4"	18	21	13
2	1/2" x 1/4"	21	26	16
3	1/2" x 3/8"	21	26	16
4	3/4" x 1/2"	24	32	18
5	1" x 1/2"	27	38	20
6	1" x 3/4"	27	38	20
7	1 1/4" x 1/2"	30	46	22
8	1 1/4" x 3/4"	30	46	22
9	1 1/4" x 1"	30	46	22
10	1 1/2" x 1/2"	32	54	23
11	1 1/2" x 3/4"	32	54	23
12	1 1/2" x 1"	32	54	23
13	1 1/2" x 1 1/4"	32	54	23
14	2" x 3/4"	36	63	25
15	2" x 1"	36	63	25
16	2" x 1 1/4"	36	63	25
17	2" x 1 1/2"	36	63	25

Reducer



Black



Galvanized

	SIZE	End to End Length (mm)
		L
1	3/4" x 1/2"	38
2	1" x 1/2"	42
3	1" x 3/4"	42
4	1 1/4" x 1/2"	48
5	1 1/4" x 3/4"	48
6	1 1/4" x 1"	48
7	1 1/2" x 1/2"	52
8	1 1/2" x 3/4"	52
9	1 1/2" x 1"	52
10	1 1/2" x 1 1/4"	52
11	2" x 1/2"	58
12	2" x 3/4"	58
13	2" x 1"	58
14	2" x 1 1/4"	58
15	2" x 1 1/2"	58
16	2 1/2" x 1 1/4"	65
17	2 1/2" x 1 1/2"	65
18	2 1/2" x 2"	65
19	3" x 1 1/2"	72
20	3" x 2"	72
21	3" x 2 1/2"	72
22	4" x 2"	85
23	4" x 2 1/2"	85
24	4" x 3"	85

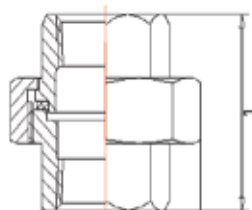
Union



Black



Galvanized



	SIZE	End to End Length (mm)
		L
1	1/2"	48
2	3/4"	52
3	1"	58
4	1 1/4"	65
5	1 1/2"	70
6	2"	78
7	2 1/2"	85
8	3"	95
9	4"	113,5

Distributed by

Sinar Mas Andhika

For *Stress-Free* Piping System