



SCI CORPORATION CO., LTD

World Quality Valves

Product Catalogue

Gate Valve | Check Valve | Single & Double Air Valve

Standard UL/FM, BS 5150, BS 5163



The SCI resilient wedge gate valve Model 105U is recommended for fire main and distribution service available size from 2½" - 12" sizes. Model 105 U gate valve is designed to offer resistance against high differential pressure and back pressure or back flow, also suitable for use as a tight shut-off service.

FEATURES

- Working pressure 25 bar (Non - Shock Pressure)
- Flange conforms with ANSI B16.1, class 125
- Rising stem OS & Y
- Replaceable wedge (Disc)
- Bubble tight shut-off
- Full port flow-low head loss
- Epoxy coated internal & external
- Vulcanized encapsulated resilient wedge
- Three bosses are provided, one boss with tapped and plug



QUALITY CERTIFIED BY:



ISO 9001
File No. 438881 QM08
ISO 14001
File No.438881 UM

LISTED NO. EX6208



APPROVED NO. 3024398

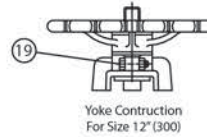
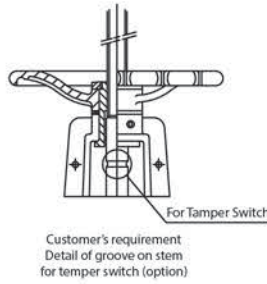
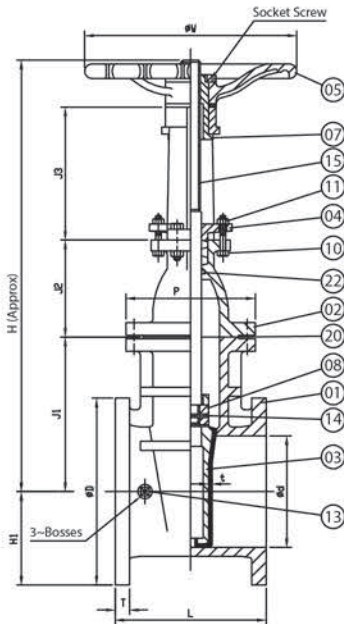


LISTED NO. 2100 122.7

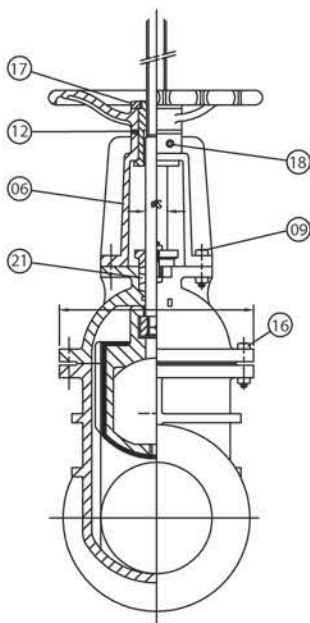
DIMENSIONS AND MATERIALS

Remark - Flanged dimensions ANSI B 16.1 Class 125 but drilling is available as follow

1. ANSI B 16.1 Class 125
2. AS2129 T-D
3. AS2129 T-E
4. BS. EN1092-2 PN. 10,16



No.	Parts	Material	BS. SPEC.
01	Body	Cast Iron	A 126 Class B
02	Bonnet	Cast Iron	A 126 Class B
03	Disc	Cast Iron	A 126 Class B
		Rubber Buna N /EPDM	D 2000 BK 707 / D 2000 CA 707
04	Gland	Cast Iron	A 126 Class B
05	Hand Wheel	Cast Iron	A 126 Class B
06	Yoke	Cast Iron	A 126 Class B
07	Yoke Sleeve	Bronze	B 62
08	Stem Nut	Bronze	B 62
09	Yoke Bonnet Bolt & Nut	Galvanized Steel	A 307 Grade B
10	Gland Bolt	Galvanized Steel	A 307 Grade B
11	Gland Nut	Brass	B 21
12	Hand Wheel Washer	Brass	B 21
13	Plug	Malleable Iron	A 47
14	Pin	Stainless Steel	A 276 Type 304
15	Stem	Brass / Stainless Steel	B 21 / A 276 Type 304
16	Bonnet Bolt & Nut	Galvanized Steel	A 307 Grade B
17	Hand Wheel Nut	Galvanized Steel	A 307 Grade B
18	Grease Screw	Galvanized Steel	—————
19	Yoke Bolt & Nut	Galvanized Steel	A 307 Grade B
20	Bonnet Gasket	Rubber Buna N /EPDM	D 2000 BK 707 / D 2000 CA 707
21	Packing	PTFE Impregnated Braided	—————
22	O-Ring D	Rubber Buna N /EPDM	D 2000 BK 707 / D 2000 CA 707



Size Ød		L	ØD	T	ØS	H	H ₁	ØW	Plug Size	t	J ₁	J ₂	J ₃	□	P	No. of Turns	APPROVAX WEIGHT	
in.	mm.																kgs.	lbs.
2½	65	190	178	17.5	25.4	336	89	180	½" PT.	3	120	62	100	170	143	13	22.5	49.6
3	80	203	191	19	25.4	394	96	180	½" PT.	3	130	94	104	184	152	16	29	64
4	100	229	229	23.8	28.6	485	115	250	½" PT.	4	147	135	134	223	163	22	43.2	95.2
6	150	267	279	25.4	31.5	633	140	300	¾" PT.	4	212	166	190	288	196	30	73.5	162
8	200	292	343	28.6	34.9	776	172	345	¾" PT.	4	282	179	238	359	227	33	127	280
10	250	330	406	30.2	44	968	203	407	1" PT.	4	323	250	300	422	242	41	207	456.2
12	300	356	483	31.8	44	1111	242	450	1" PT.	6	383	260	370	510	284	49	335.0	737.0



Valves are manufactured and tested in accordance with BS 5150 rated pressure PN 10 straight through bore type non rising stem. Cost saving feature is replaceable wedge without taking the valve out from the pipeline. Valves are designed especially for potable water, waste water and suitable for all types of water and air.

FEATURES

- Vulcanized encapsulated resilient wedge, bubble tight shut-off, low head and loss.
- Valve ends are flange type.
- Flange drilling to suit BS EN 1092-2 PN 10.
- Various types of operators such as handwheel, cap.

DESIGN SPECIFICATIONS

- Size : 50 mm to 300 mm
- Working Pressure : 10 Bar
- Shell test : 1.5xPN
- Seat test : 1.1xPN
- Coating: Fusion bonded (blue) epoxy of 150 micron
- Application fluid: clean water, sea water, sewage

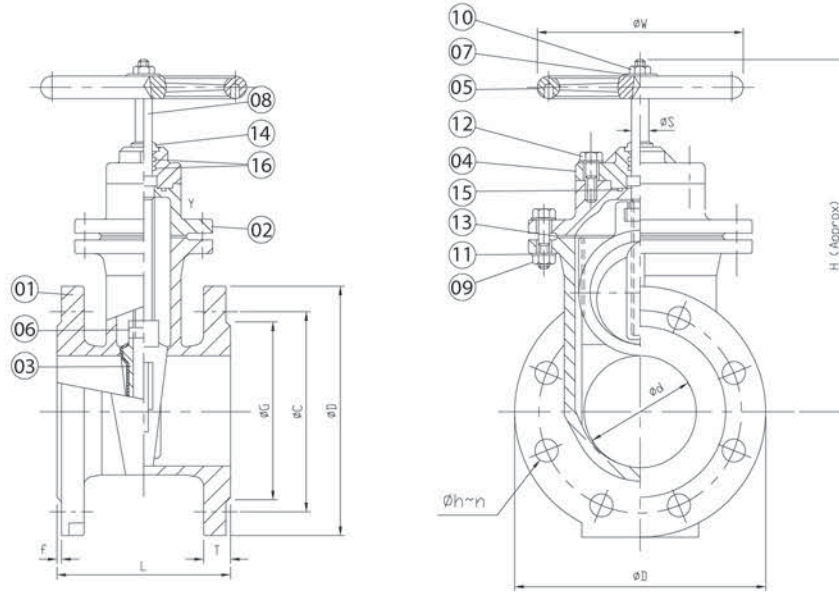
QUALITY CERTIFIED BY:

ISO 9001
File No. 438881 QM08

ISO 14001
File No.438881 UM



RESILIENT WEDGE GATE VALVE



No.	Parts	Material	BS. SPEC.
01	Body	Cast Iron	EN 1561-EN-GJL-250
02	Bonnet	Cast Iron	EN 1561-EN-GJL-250
03	Disc	Cast Iron	EN 1561-EN-GJL-250
		Rubber (NBR)	EN 681-1
04	Stuffing Box	Cast Iron	EN 1561t-EN-GJL-250
05	Hand Wheel	Cast Iron	EN 1561-EN-GJL-200
06	Stem Nut	Gunmetal	EN 1982-CC491K
07	Hand Wheel Washer	Galvanized Steel	1506
08	Stem	Stainless Steel	EN 10088-3 GR 1. 4301
09	Bonnet Bolt & Nut	Galvanized Steel	4190
10	Hand Wheel Nut	Galvanized Steel	4190
11	Washer	Galvanized Steel	1506
12	Stuffing Box Bolt	Galvanized Steel	4190
13	Bonnet Gasket	Rubber (NBR)	EN 681 - 1
14	Wiper Ring	Rubber (NBR)	EN 681 - 1
15	O-Ring A	Rubber (NBR)	EN 681 - 1
16	O-Ring B	Rubber (NBR)	EN 681 - 1

SIZE Ød	L	FLANGED BS. EN1092-2 PN. 10							ØS	H	ØW
		ØD	ØC	ØG	Øh	n	T	f			
50	178±2	165	125	99	19	4	20	3	16	225	160
65	190±2	185	145	118	19	4	20	3	16	247	160
80	203±2	200	160	132	19	8	22	3	18	272	180
100	229±2	220	180	156	19	8	24	3	20	307	200
125	254±3	250	210	184	19	8	26	3	22	335	250
150	267±3	285	240	211	23	8	26	3	24	407	250
200	292±3	340	295	266	23	8	26	3	25.4	507	280
250	330±3	395	350	319	23	12	28	3	31.8	602	315
300	356±3	445	400	370	23	12	28	4	31.8	680	355



Valves are manufactured and tested in according to UL312, ULC class 175 and FM class 200. The valve designed to offer positive seating for resistance against back pressure of back flow and efficient relax surge in line, suitable for fire protection and distribution service.

FEATURES

- Working pressure 25 bar (Non - Shock Pressure)
- Flange conforms with ANSI B16.1, class 125
- Full port and easy in-line service
- Replaceable resilient disc seat and disc
- Lifting lug on cover
- Epoxy coated internal and external



QUALITY CERTIFIED BY:



ISO 9001
File No. 438881 QM08
ISO 14001
File No.438881 UM

LISTED NO. 34S2

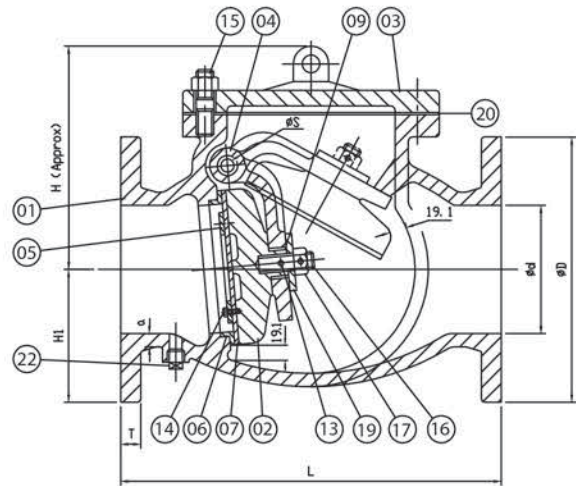
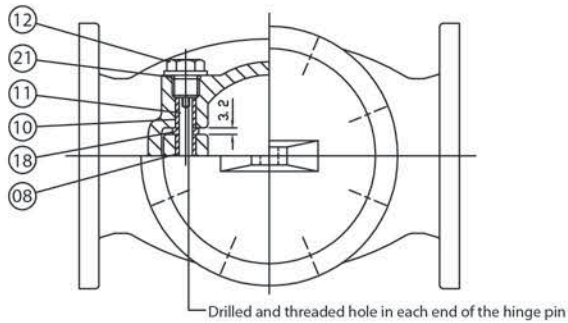


APPROVED NO. 1210



LISTED NO. 2100 122.3

DIMENSIONS AND MATERIALS



Remark - Flanged dimensions ANSI B 16 1 Class 125 but drilling is available as follow

1. ANSI B 16. 1 Class 125
2. AS2129 T-D
3. AS2129 T-E
4. BS. EN1092-2 PN. 10,16

No.	Parts	Material	BS. SPEC.
01	Body	Cast Iron	A 126 Class B
02	Disc	Cast Iron	A 126 Class B
03	Cover	Cast Iron	A 126 Class B
04	Arm	Cast Iron	A 126 Class B
05	Seat Holder	Bronze	B 62
06	Body Seat Ring	Bronze	B 62
07	Disc Seat Ring	Rubber (Buna N/EPDM)	D 2000 BK 707/ D2000 CA 707
08	Arm Bushing	Bronze	B 62
09	Arm Disc Bushing	Bronze	B 62
10	Body Bushing	Bronze	B 62
11	Hinge Pin	Stainless Steel	A 276 Type 304
12	Plug (A)	Brass	B 21
13	Pin	Stainless Steel	A 276 Type 304
14	Disc Seat Bolt	Stainless Steel	A 276 Type 304
15	Cover Stud & Nut	Galvanized Steel	A 307 Grade B
16	Disc Stud	Brass	B 21
17	Disc Nut	Brass	B 21
18	Spacer	Bronze	B 62
19	Washer	Brass	B 21
20	Cover Gasket	Rubber (Buna N/EPDM)	D 2000 BK 707/ D2000 CA 707
21	O-Ring	Rubber (Buna N/EPDM)	D 2000 BK 707/ D2000 CA 707
22	Plug (B)	Malleable Iron	A 47

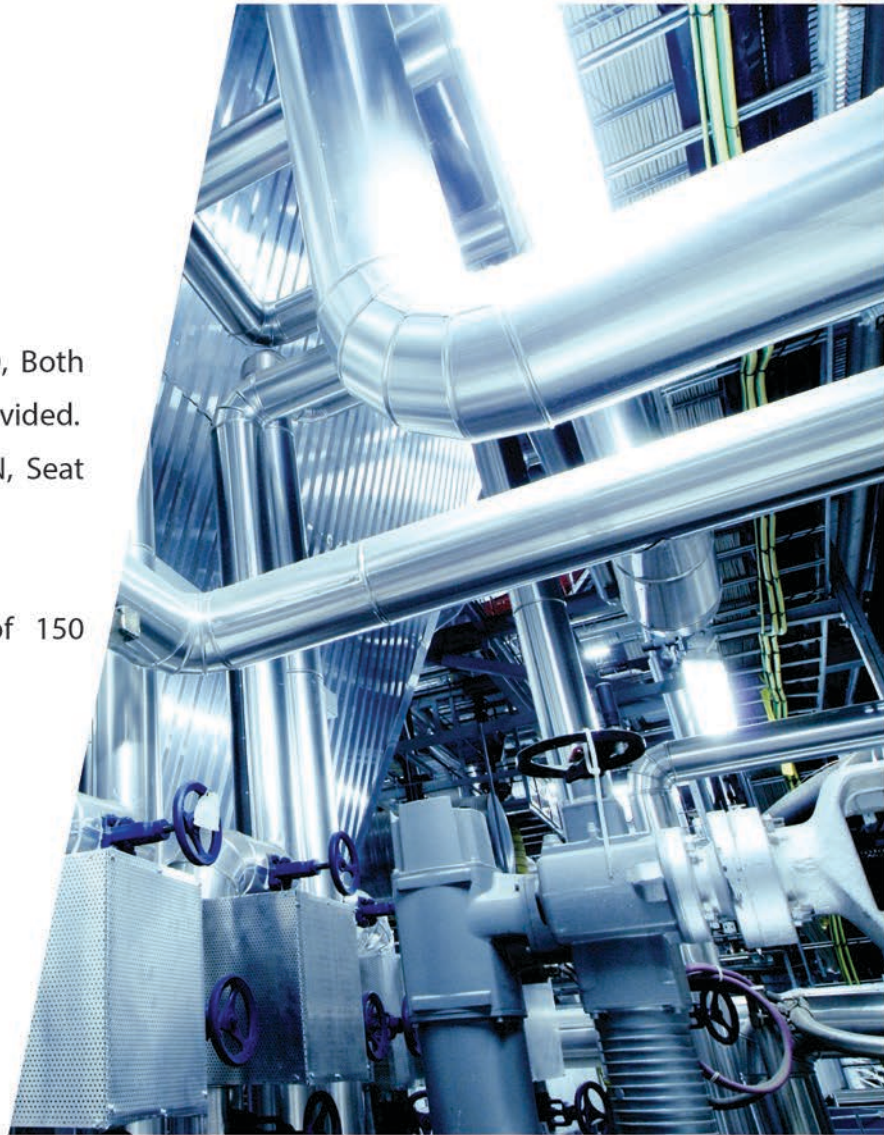
SIZE Ød		L	ØD	T	q	H	H1	ØS
in.	mm.							
2½	65	216	178	17.5	10	167	89	9.5
3	80	241	191	19.1	12	190	96	9.5
4	100	292	229	23.8	13	211	115	9.5
6	150	356	279	25.4	16	269	140	15.9
8	200	495	343	28.6	18	310	172	19.1
10	250	622	406	30.2	21	352	203	22.2
12	300	698	483	31.8	23	413	242	22.2



Valves are manufactured and tested in accordance with BS 5153 PN10 generally recommended to prevent back flow with minimum resistance to flow, because of full water design. Suitable for all types of water, air and steam.

FEATURES

- Sizes are available from DN 50 to DN 300, Both metal seated and resilient seated can be provided.
- Working pressure: 10 bar, Shell test: 1.5PN, Seat test: 1.1xPN.
- Flanged drilling to suit BS EN 1092-2 PN10.
- Coating: Fusion bonded (blue) epoxy of 150 micron.

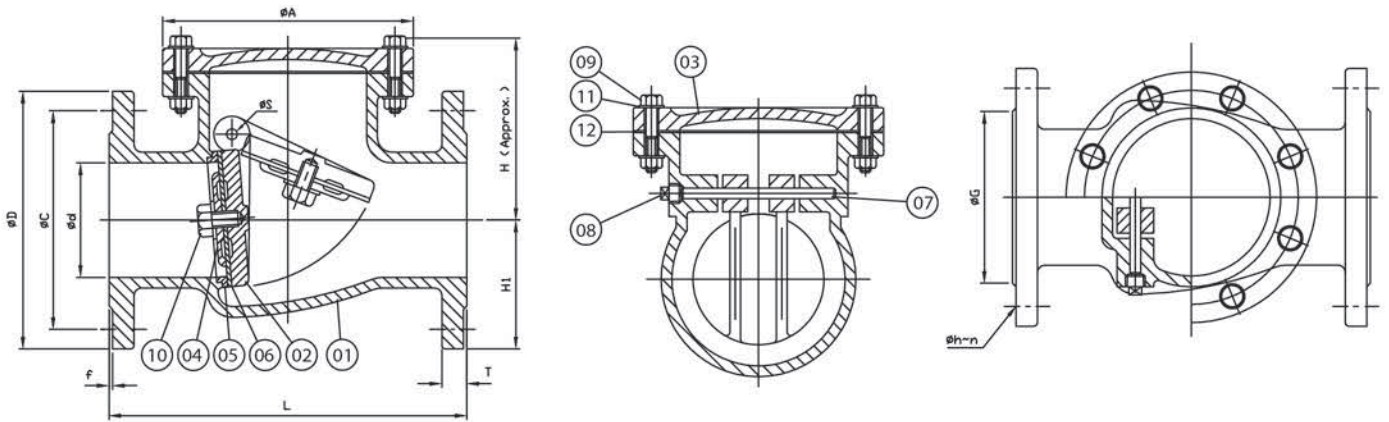


QUALITY CERTIFIED BY:

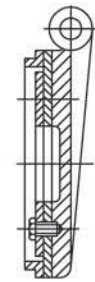
ISO 9001
File No. 438881 QM08

ISO 14001
File No. 438881 UM

DIMENSIONS AND MATERIALS



No.	Parts	Material	BS. SPEC.
01	Body	Cast Iron	EN1561-EN-GJL-250
02	Disc	Cast Iron	EN1561-EN-GJL-250
03	Cover	Cast Iron	EN1561-EN-GJL-250
04	Seat Holder	See Remark	—————
05	Body Seat Ring	Bronze	B 62
06	Body Seat Ring	Gunmetal	EN 1982-CC491K
07	Hinge Pin	Stainless Steel	EN10088-3 Dr. 1. 4301
08	Plug	Malleable Iron	—————
09	Cover Bolt & Nut	Galvanized Steel	4190
10	Seat Holder Bolt	Stainless Steel	EN10088 Grade 1.4301
11	Washer	Galvanized Steel	1506
12	Cover Gasket	Non Asbestos Sheet	—————



For Size 200 - 300 mm.

Remark -Part No. 4 (Seat Holder)
 - Size 50 - 150 mm. => Cast Iron
 - Size 200 - 300 mm. => Ductile Iron
Coating - Fusion bonded epoxy (blue) 150 microns

SIZE $\varnothing d$	L	FLANGED BS. EN1092-2 PN. 10							$\varnothing A$	H	H1	$\varnothing W$
		$\varnothing D$	$\varnothing C$	$\varnothing G$	$\varnothing h$	n	T	f				
50	203±2	165	125	99	19	4	20	3	135	105	83	6.4
65	216±2	185	145	118	19	4	20	3	165	125	93	7.9
80	241±2	200	160	132	19	8	22	3	180	150	100	7.9
100	292±2	220	180	156	19	8	24	3	216	160	110	9.5
125	330±2	250	210	184	19	8	26	3	246	185	125	12.7
150	356±2	285	240	211	23	8	26	3	290	195	143	12.7
200	495±3	340	295	266	23	8	26	3	365	235	170	19.1
250	622±4	395	350	319	23	12	28	3	432	270	198	22.2
300	698±4	445	400	370	23	12	28	4	504	320	223	22.2



Valves are manufactured and tested in accordance with BS 5163:86-A rated pressure PN 16 straight through bore type non rising stem. Cost saving feature is replaceable wedge without taking the valve out from the pipeline. Valves are designed especially for potable water, waste water and suitable for all types of water and air.

FEATURES

- Vulcanized encapsulated resilient wedge, bubble tight shut-off, low head loss.
- Valve ends are flange type.
- Flange drilling to suit BS EN 1092-2 PN 16.
- Various types of operators such as handwheel.



DESIGN SPECIFICATIONS

- Size : 50 mm to 300 mm.
- Working Pressure : 16 Bar.
- Shell test : 1.5xPN.
- Seat test : 1.1xPN.
- Coating: Fusion bonded (blue) epoxy of 150 micron.
- Application fluid: clean water, sea water, sewage.

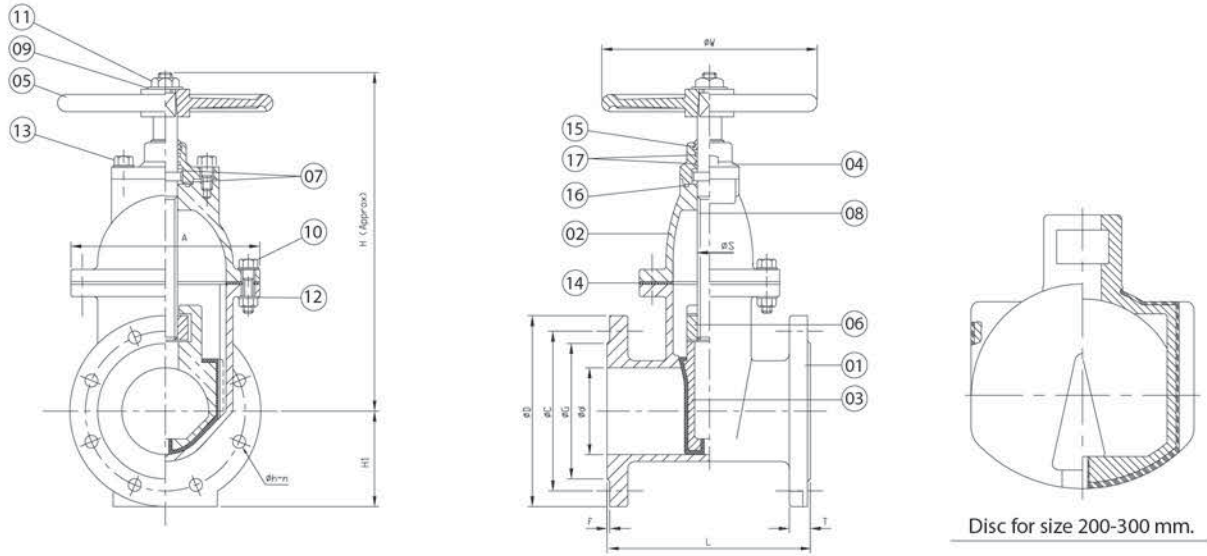


QUALITY CERTIFIED BY:

ISO 9001
File No. 438881 QM08

ISO 14001
File No.438881 UM

DIMENSIONS AND MATERIALS



No.	Parts	Material	BS. SPEC.
01	Body	Ductile Iron	EN 1563-EN-GJS-500-7
02	Bonnet	Ductile Iron	EN 1563-EN-GJS-500-7
03	Disc	Ductile Iron	EN 1563-EN-GJS-500-7
		Rubber (EPDM)	EN 681-1
04	Stuffing Box	Ductile Iron	EN 1563-EN-GJS-500-7
05	Hand Wheel	Cast Iron	EN 1561-EN-GJS-200
06	Stem Nut	Gunmetal	EN 1982-CC491K
07	Washer A	High Tensile Brass	EN 12165-CW721R
08	Stem	Stainless Steel	EN 10088 GR 1. 4301
09	Hand Wheel Washer	Stainless Steel	EN 10088 GR 1. 4301
10	Bonnet Bolt & Nut	Stainless Steel	EN 10088 GR 1. 4301
11	Hand Wheel Nut	Stainless Steel	EN 10088 GR 1. 4301
12	Washer	Stainless Steel	EN 10088 GR 1. 4301
13	Stuffing Box Bolt	Stainless Steel	EN 10088 GR 1. 4301
14	Bonnet Gasket	Rubber (EPDM)	EN 681 - 1
15	Wiper Ring	Rubber (EPDM)	EN 681 - 1
16	O-Ring A	Rubber (EPDM)	EN 681 - 1
17	O-Ring B	Rubber (EPDM)	EN 681 - 1

SIZE Ød	L	FLANGED BS. EN1092-2 PN. 16							ØS	A	H	H1	ØW
		ØD	ØC	ØG	Øh	n	T	f					
50	178±2	165	125	99	19	4	19	3	28	155	286	83	180
65	190±2	185	145	118	19	8	19	3	28	170	314	93	180
80	203±2	200	160	132	19	8	19	3	28	184	335	100	200
100	229±2	220	180	156	19	8	19	3	32	216	373	110	250
150	267±3	285	240	211	23	8	19	3	36	284	479	143	315
200	292±3	340	295	266	23	12	20	3	40	345	567	170	315
250	230±3	400	355	319	28	12	22	3	40	425	680	200	400
300	356±3	455	410	370	28	12	24.5	4	40	479	768	228	400

AIR VALVE WITH RESILENT ORIFICES



SCI air valves have been especially designed to allow the most efficient method of releasing or admitting air during the filling and emptying pipelines or vessels and the release of air accumulating in pipeline during normal working conditions.

SPECIAL FEATURES

- Resilient orifices : Seal from very low to high working pressure (0.1-10.0 bar)
- ABS float : Proven long lasting material specific gravity (0.75-0.80)
- No Protruding levers : This features reduce maintenance and servicing to a minimum
- No premature closing : Comply with JIS B 2063 Standard

SMALL ORIFICE

- Automatically releases accumulated air in pipelines.

LARGE ORIFICE

- Automatically releases or admits large volume of air for efficient filling or emptying of pipelines to protect against vacuum or pipeline damage.

DOUBLE ORIFICE AND HIGH SPEED (QUICK TYPE)

- The combination of small and large orifice becomes a single unit.

DOUBLE ORIFICE WITH INTEGRAL ISOLATING VALVE

- The combination of small and large orifice plus integral isolating valve becomes a single unit.

MATERIALS USED CONSTRUCTION

- Body and cover : Cast Iron or Spheroidal Graphite Iron.
- Orifice and Sealing Ring : Moulded Synthetic Rubber.
- Float : ABS (Acrylonitrile Butadiene Styrene)/ Stainless Steel.
- Float guide : ABS / Gunmetal / Cast Iron.

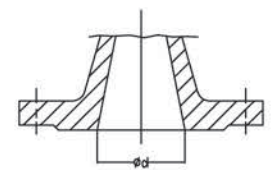
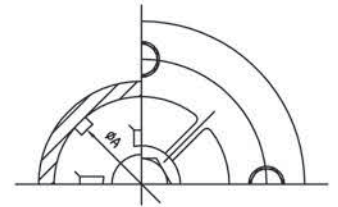
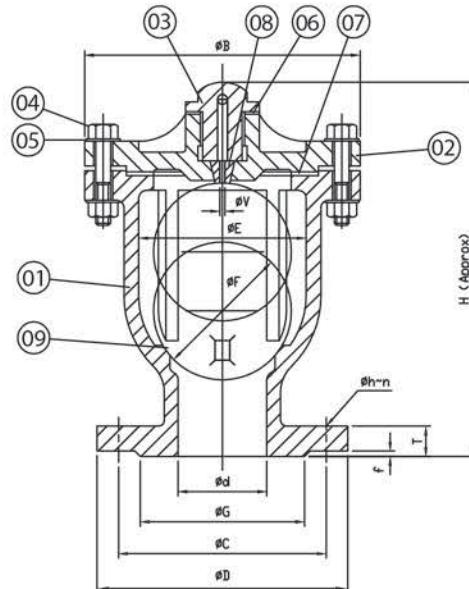
QUALITY CERTIFIED BY:

ISO 9001
File No. 438881 QM08

ISO 14001
File No.438881 UM

DIMENSIONS AND MATERIALS

Working pressure: 10 bar
Hydro shell test pressure: 15 bar
Hydro seat test pressure: 10 bar



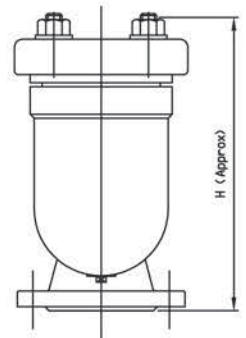
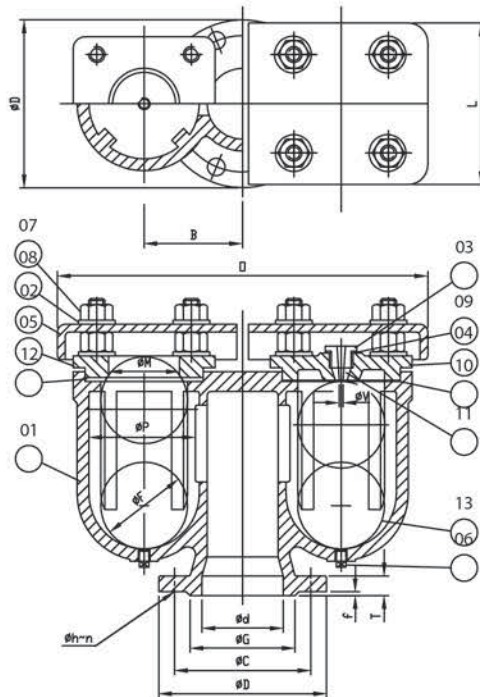
Reducer bore for size 65-150 mm

No.	Parts	Material	BS. SPEC.
01	Body	Cast Iron	EN 1561-EN-GJL-250
02	Cover	Cast Iron	EN 1561-EN-GJL-250
03	Seat Holder	High Tensile Brass	EN 12165-CW721R
04	Cover Bolt & Nut	Galvanized Steel	4190
05	Seat Holder	Galvanized Steel	1506
06	Holder Gasket	Non Asbestos Sheet	—————
07	Cover Gasket	Rubber (NBR)	EN681-1
08	Small Orifice	Rubber (NBR)	EN681-1
09	Float	ABS	—————

SIZE Ød	FLANGED BS. EN1092-2 PN. 10							ØA	ØB	ØE	ØF	H	ØV
	ØD	ØC	ØG	Øh	n	T	f						
25	115	85	65	14	4	16	3	53	114	62	50	161	1.8
40	150	110	84	19	4	18	3	63	126	72	60	178	2.0
50	165	125	99	19	4	20	3	94	190	110	90	229	2.2
65	185	145	118	19	4	20	3	94	190	110	90	235	2.2
80	200	160	132	19	8	22	3	99	200	118	95	235	2.2
100	220	180	156	19	8	24	3	104	220	122	100	268	2.5
150	285	240	211	23	8	26	3	114	230	132	110	300	2.8

DIMENSIONS AND MATERIALS

Working pressure: 10 bar
Hydro shell test pressure: 15 bar
Hydro seat test pressure: 10 bar



No.	Parts	Material	BS. SPEC.
01	Body	Cast Iron	EN 1561-EN-GJL-250
02	Cover	Cast Iron	EN 1561-EN-GJL-250
03	Seat Holder	High Tensile Brass	EN 12165-CW721R
04	Lid	Cast Iron	EN 1561-EN-GJL-250
05	Seat Cover	Cast Iron	EN 1561-EN-GJL-250
06	Plug	Malleable Iron	—————
07	Cover Stud & Nut	Galvanized Steel	4190
08	Washer	Galvanized Steel	1506
09	Holder Gasket	Non Asbestos Sheet	—————
10	Gasket	Rubber (NBR)	EN681-1
11	Small Orifice	Rubber (NBR)	EN681-1
12	Plat Seat	Rubber (NBR)	EN681-1
13	Float	ABS	—————

SIZE Ød	FLANGED BS. EN1092-2 PN. 10							ØP	ØF	ØV	ØM	□	B	B	B
	ØD	ØC	ØG	Øh	n	T	f								
50	165	125	99	19	4	20	3	104	90	2.2	63	300	80	150	245
65	185	145	118	19	4	20	3	104	90	2.2	63	300	80	150	260
80	200	160	132	19	8	22	3	115	95	2.2	68	372	93.5	184	300
100	220	180	156	19	8	24	3	112	100	2.5	70	418	113	192	345
150	285	240	211	23	8	26	3	132	110	2.8	78	454	128	218	395
200	340	295	266	23	8	26	3	150	125	3.5	88	560	165	294	440
250	395	350	319	23	12	28	3	170	140	4	100	714	202	320	515