

HIGH PERFORMANCE
BRONZE BRASS VALVE



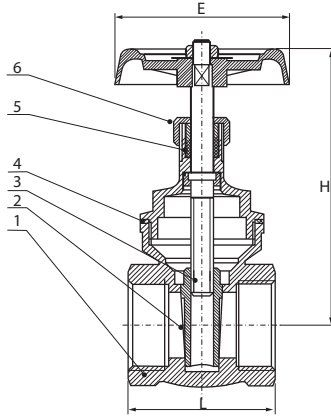
YUTA®

WWW.YUTA.CO.ID

16 BAR GATE VALVE

Fig. GT

Non Rising Stem



MATERIALS

No	PART	MATERIAL
1	Body	Brass
2	Disc	Brass
3	Stem	Brass
4	Gasket	PTFE
5	Packing	PTFE
6	Gland Nut	Brass

• Size : 1/2" - 4"

Dimensions

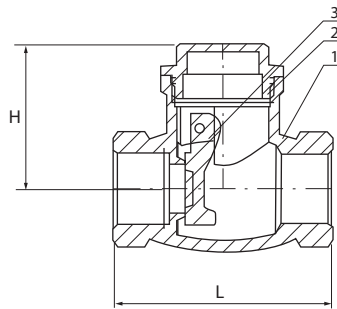
Valve Size	Inch	15	20	25	32	40	50	65	80	100
L		40	48	52	59.5	63	72	83	93	104
H		75	83	93	112	121	150	185	212	240
E		56	61.5	61.5	74.5	84.5	84.5	113	143	143

Design Specification

* Threaded Ends : BSPT

16 BAR SWING CHECK VALVE

Fig. C



MATERIALS

No	PART	MATERIAL
1	Body	Brass
2	Cap	Brass
3	Disc	Brass

• Size : 1/2" - 4"

Dimensions

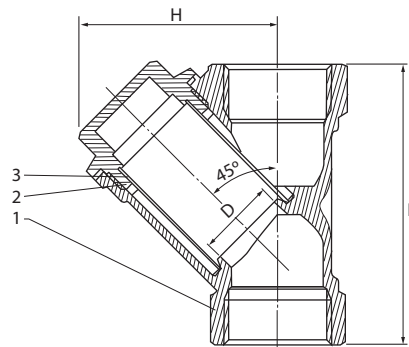
Valve Size	Inch	15	20	25	32	40	50	65	80	100
L		58	70	79	92	100	119	146	164	195
H		38.5	42	47	60.5	68	75	89	102	122

Design Specification

* Threaded Ends : BSPT

16 BAR Y - PATTERN STRAINER

Fig. ST



MATERIALS

No	PART	MATERIAL
1	Body	Brass
2	Bonnet	Brass
3	Filter Mesh	Stainless Steel 304

• Size : 1/2" - 4"

Dimensions

Valve Size	Inch	15	20	25	32	40	50	65	80	100
L		56	69	82	90	101	123	174	199	245
D		14	19	25	30	38	48	63.5	77.6	100
H		41	49	59.5	70	76.5	92	126	145	173

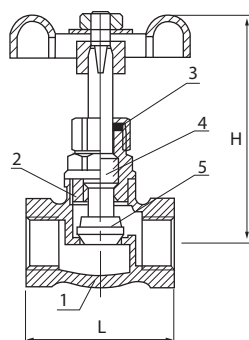
Design Specification

* Threaded Ends : BSPP

16 BAR GLOBE VALVE

Fig. BK

Non Rising Stem



• Size : 1/2" - 2"

Dimensions

Valve Size	Inch mm	1/2	3/4	1	1 1/4	1 1/2	2
L		47	55	65	74	87	102
H		62	67	75	92	100	117

MATERIALS

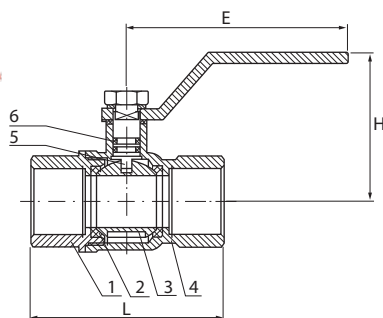
No	PART	MATERIAL
1	Body	Brass
2	Bonnet	Brass
3	Gasket	PTFE
4	Stem	Brass
5	Plug	Brass

Design Specification

★ Threaded Ends : BSPT

25 BAR BALL VALVE

Fig. FBS



• Size : 1/2" - 4"

Dimensions

Valve Size	Inch mm	1/2	3/4	1	1 1/4	1 1/2	2	2 1/2	3	4
E		102	103.5	114.5	131	149	150	220	220	280
H		42	54.5	58.5	64.5	72.5	82.5	111	124	134
L		63	70.5	77.5	94	102	118	138	157.5	175

MATERIALS

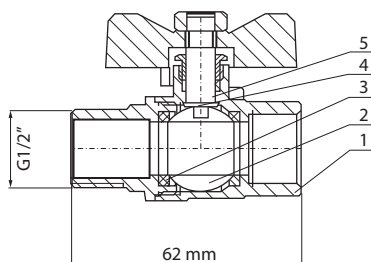
No	PART	MATERIAL
1	Body	Brass
2	Ball	Brass (Chrome Plated)
3	Seat	PTFE
4	Cap	Brass
5	Stem	Brass
6	O-Ring	NBR

Design Specification

★ Threaded Ends : BSPT

16 BAR BALL VALVE MALE TO FEMALE

Fig. MFB



• Size : 1/2"

MATERIALS

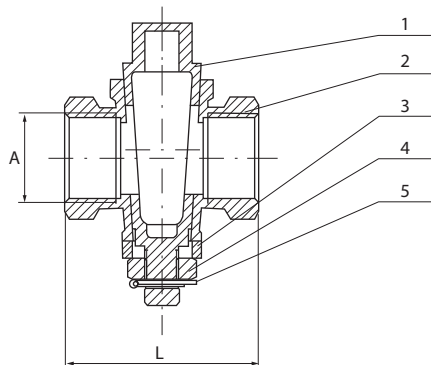
No	PART	MATERIAL
1	Body	Brass
2	Ball	Brass
3	Seat Ring	PTFE
4	Bonnet	Brass
5	Stem	Brass

Design Specification

★ Threaded Ends : BSPT

10 BAR PLUG VALVE

Fig. MC



MATERIALS

No	PART	MATERIAL
1	Plug	Brass
2	Body	Brass
3	Washer	Brass
4	Nut	Brass
5	Locking	Brass

• Size : 1/2" & 3/4"

Dimensions

Valve Size	Inch	□	□
	mm	15	20
A		66.5	79
L		45.5	53.5

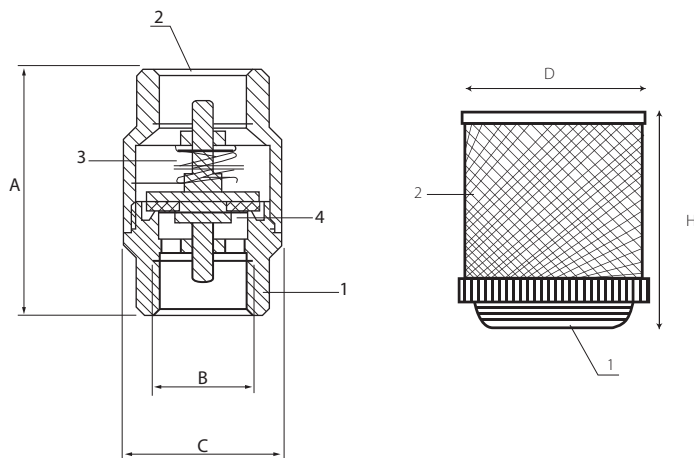
Design Specification

★ Threaded Ends : BSPT

10 BAR FOOT VALVE

Fig.TS & TL

Fig.FTS



• Size : 1/2" - 4"

Dimensions (TL & TS)

Valve Size	Inch	□	□	1	1□	1□	2	2□	3	4
	mm	15	20	25	32	40	50	65	80	100
A		54	57.5	64.5	69	79	90.5	98	107.5	111
C		29.5	34	44	55	61	77.5	95	110	140.5

Dimensions (FTS)

Valve Size	Inch	□	□	1	1□	1□	2	2□	3	4
	mm	15	20	25	32	40	50	65	80	100
D		27	35	40	48	58	68	83	95	127
H		49	43	53	60	70	81	90	100	112

MATERIALS (TL & TS)

No	PART	MATERIAL
1	Body	Brass
2	Cap	Brass
3	Spring	SS
4	Disc	ABS

MATERIALS (FTS)

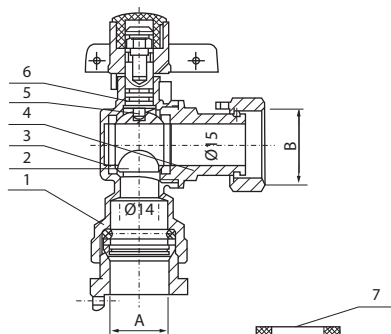
No	PART	MATERIAL
1	Plate	Stainless Steel
2	Filter Net	Stainless Steel

Design Specification

★ Threaded Ends : BSPP

10 BAR LOCKABLE ANGLE VALVE

Fig. LCBP-A



	A	B
Size	¾"	¾"
	1"	¾"

MATERIALS

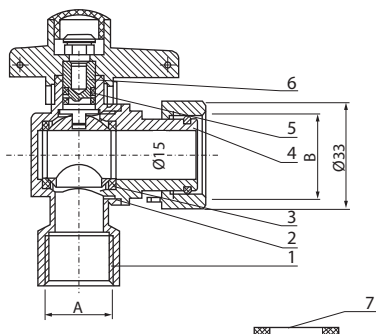
No	PART	MATERIAL
1	Body	Brass
2	Ball	Brass
3	Seat	PTFE
4	Bonnet	Brass
5	Stem	Brass
6	O Ring	NBR
7	Gasket	NBR

Design Specification

★ Threaded Ends : BSPP

10 BAR LOCKABLE ANGLE VALVE

Fig. LCB1-A



	A	B
Size	½"	¾"
	¾"	¾"

MATERIALS

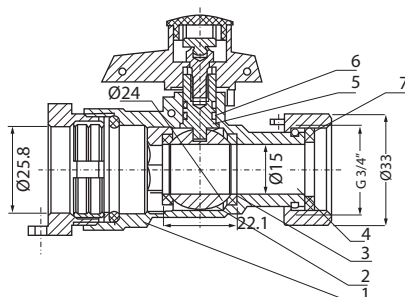
No	PART	MATERIAL
1	Body	Brass
2	Ball	Brass
3	Seat	PTFE
4	Bonnet	Brass
5	O Ring	NBR
6	Stem	Brass
7	Gasket	NBR

Design Specification

★ Threaded Ends : BSPP

10 BAR LOCKABLE STRAIGHT VALVE

Fig. LCBP-S



MATERIALS

No	PART	MATERIAL
1	Body	Brass
2	Ball	Brass
3	Seat	PTFE
4	Bonnet	Brass
5	Stem	NBR
6	O ring	Brass
7	Gasket	NBR

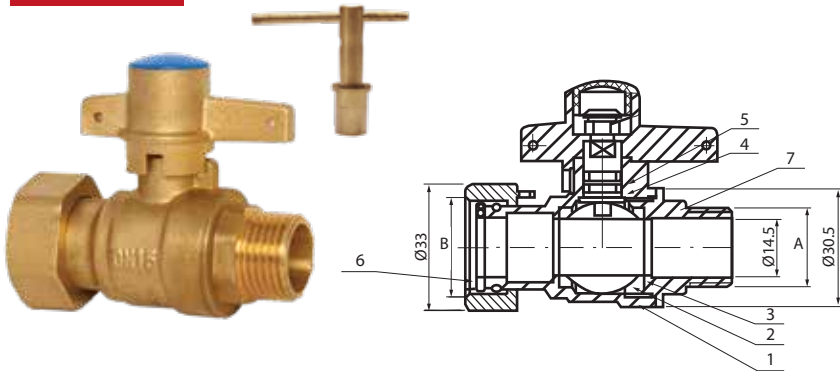
Design Specification

★ Threaded Ends : BSPP

• Size : 25 mm x ¾"

10 BAR LOCKABLE STRAIGHT VALVE

Fig. LCBMS



	A	B
Size	1/2"	3/4"
	3/4"	1"

MATERIALS

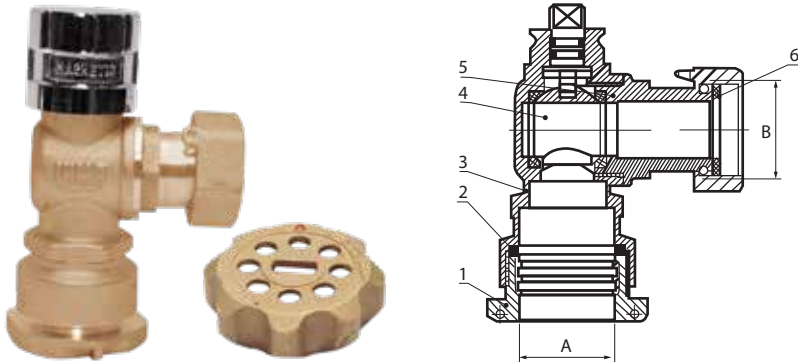
No	PART	MATERIAL
1	Body	Brass
2	Ball	Brass
3	Seat	PTFE
4	Stem	Brass
5	O Ring	NBR
6	Gasket	NBR
7	Bonnet	Brass

Design Specification

★ Threaded Ends : BSPP

10 BAR LOCKABLE MAGNETIC ANGLE VALVE

Fig. LCBU-A



	A	B
Size	3/4"	3/4"
	1"	3/4"

MATERIALS

No	PART	MATERIAL
1	Gland	Brass
2	O-Ring	NBR
3	Body	Brass
4	3-Way Ball	Brass
5	Bonnet	Brass
6	Gasket	NBR

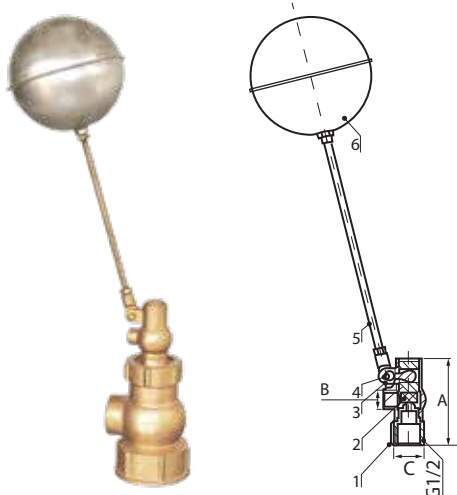
Design Specification

★ Threaded Ends : BSPP



10 BAR FLOATING ACTUATED THREADED VALVE

Fig. 901



• Size: 1/2" - 2 1/2"

Dimensions

Valve Size	Inch	□	□	1	1□	2	2□
	mm	15	20	25	40	50	65
A		72,5	118,5	118,5	147	151	195
B		12	16	16	28	28	44
C		25	30	38	57	70	86

MATERIALS

No	PART	MATERIAL
1	Body	Brass
2	Seal	NBR
3	Wire Clasp	Stainless Steel 304
4	Shaft Pin	Brass
5	Leverage	Stainless Steel 304
6	Float	Stainless Steel 304

Design Specification

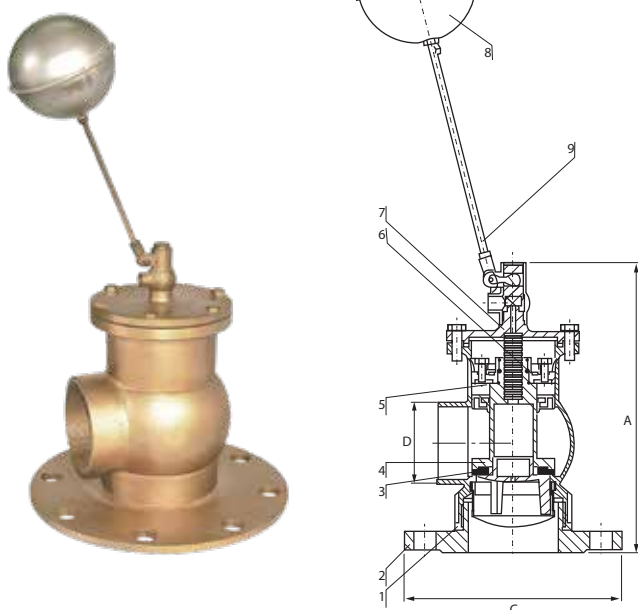
★ Threaded Ends : BSPP

The Technical Requirement

- ★ Nominal Pressure: 0.6MPa
- ★ Applicable medium water
- ★ The working temperature: 0°C ≤ t ≤ 60°C
- ★ Minimum start-up pressure: 0.04MPa
- ★ Riveted firmly between sealing piece and small plunger
- ★ Tighten anaerobic adhesive on the connecting thread of valve body and small shell

10 BAR FLOATING ACTUATED THREADED VALVE

Fig. 902



• Size: 3" - 8"

Dimensions

Valve Size	DN	80	100	150	200
A		246,5	268,5	288,5	346,5
C (∅)		185	210	280	330
D		62	72	93	126

MATERIALS

No	PART	MATERIAL
1	Body	Brass
2	Flange	Brass
3	Gland	NBR
4	Piston	Brass
5	O Ring	NBR
6	Spring	Stainless Steel
7	Bonnet	Brass
8	Float	Stainless Steel 304
9	Lever	Stainless Steel 304

Design Specification

★ Flange Ends : Class JIS10K

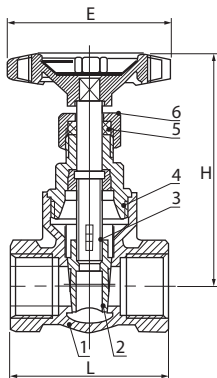
The Technical Requirement

- ★ Nominal Pressure: 0.6MPa
- ★ Applicable medium water
- ★ The working temperature: 0°C ≤ t ≤ 60°C
- ★ Minimum start-up pressure: 0.04MPa

20 BAR Gate Valve

Fig. GTZ

Non Rising Stem



• Size : 1/2" - 2"

Dimensions

Valve Size	Inch mm	15	20	25	32	40	50
L		49.5	53.5	62	70	77	87
H		73.9	88.3	111.3	117.9	136.5	166.5
E		56	68.5	75	80	93	100

MATERIALS

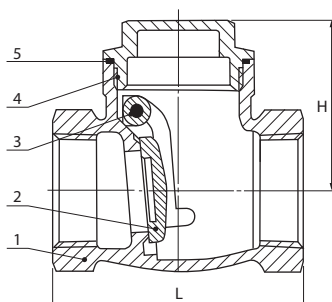
No	PART	MATERIAL
1	Body	Bronze
2	Wedge	Bronze
3	Stem	Brass
4	Bonnet	Bronze
5	Packing	PTFE
6	Gland Nut	Brass

Design Specification

★ Threaded Ends : BSPT

20 BAR SWING CHECK VALVE

Fig. CZ



• Size : 1/2" - 2"

Dimensions

Valve Size	Inch mm	15	20	25	32	40	50
L		50	58	70	82	90	110
H		35	39.5	47	53.5	60	69

MATERIALS

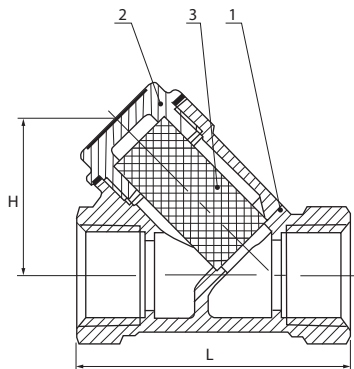
No	PART	MATERIAL
1	Body	Bronze
2	Disc	Bronze
3	Hinge Pin	Stainless Steel
4	Bonnet	Bronze
5	Gasket	PTFE

Design Specification

★ Threaded Ends : BSPT

20 BAR Y - Patern Strainer

Fig. STZ



• Size : 1/2" - 2"

Dimensions

Valve Size	Inch mm	15	20	25	32	40	50
H		33	41	49	56	62	80
L		58	70	88	96	107	126

MATERIALS

No	PART	MATERIAL
1	Body	Bronze
2	Bonnet	Bronze
3	Filter Screen	Stainless Steel

Design Specification

★ Threaded Ends : BSPT