

The KITZ logo is rendered in a bold, blue, sans-serif font. It is positioned in the upper left quadrant of the page, set against a solid orange background that forms a vertical bar. The background of the entire page is a high-angle photograph of a city skyline at dusk or dawn, with various skyscrapers and buildings under a sky with soft, wispy clouds. The lighting is warm, with the sun low on the horizon, creating a golden glow on the buildings and the sky.

# KITZ

Flanged Valves  
Building Service  
Application

The KITZ CORPORATION logo is in a bold, blue, sans-serif font, matching the main logo. It is located in the bottom right corner of the page, within an orange rectangular area that also contains the tagline. The background of this area is a lighter shade of orange with a faint, embossed pattern of interlocking gears or a similar industrial motif.

**KITZ CORPORATION**

The Brand of Reliability



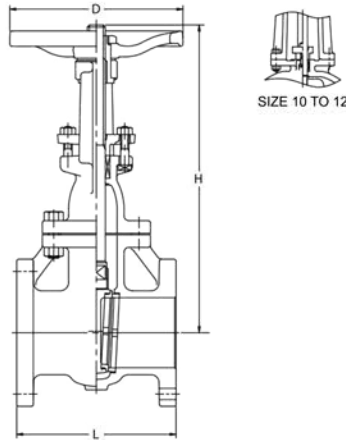
# 16 BAR GATE VALVE

Cast Iron Body, Bolted Bonnet,  
Outside Screw & Yoke, Rising Stem

ANSI STANDARD

Maximum Working Pressure 16.33Kgf/cm<sup>2</sup>  
(120°C W.O.G. Non-Shock)

Fig. 125FCL



### Materials

Parts	Material	ASTM Spec.
Body	Cast Iron	A126 CL. B
Bonnet	Cast Iron	A126 CL. B
Stem	Brass	B124 C37700
Disc	Cast Iron	A126 CL. B
Disc seat ring	Bronze	B62
Body seat ring	Bronze	B62
Gland	Ductile Iron	
Gland packing	Asbestos-free	
Gasket	Asbestos-free	
Gland bolt/nut	Carbon Steel	
Bonnet bolt/nut	Carbon Steel	
Yoke sleeve	Bronze	B62
Hand wheel	2 to 10 12 & 14	Cast Iron Ductile Iron

### Design Specifications

Items	
Shell wall thickness and general valve design	KITZ Standard
Face-to-face dimensions End-to-end dimensions	ASME B16.10 Class 125
End flange dimensions Gasket contact facing	ASME B16.1 Class 125

### Dimensions

Valve Size	inch	2	2 1/2	3	4	5	6	8	10	12	* 14
	mm	50	65	80	100	125	150	200	250	300	350
L Face-to-face		178	190	203	229	254	267	292	330	356	381
H Height (OPEN)		328	382	436	532	627	726	919	1134	1363	1560
D Handwheel Diameter		160	170	170	225	225	250	280	350	450	500

\*Note 14" (350mm) Maximum Working Pressure  
10,2Kgf/cm<sup>2</sup> (120°C W.O.G Non Shock)

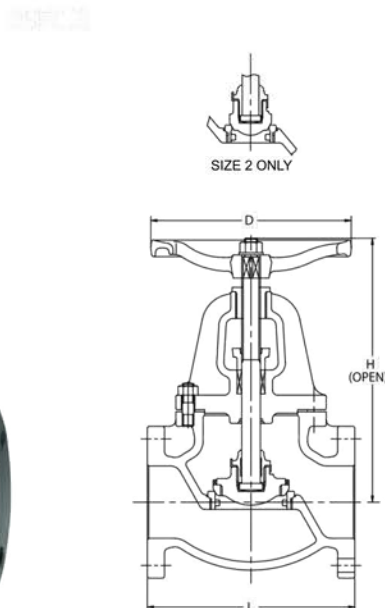
# 16 BAR GLOBE VALVE

Cast Iron Body, Bolted Bonnet,  
Outside Screw & Yoke, Rising Stem

ANSI STANDARD

Maximum Working Pressure 16.33Kgf/cm<sup>2</sup>  
(120°C W.O.G. Non-Shock)

Fig. 125FCJ



### Materials

Parts	Material	ASTM Spec.
Body	Cast Iron	A126 CL. B
Bonnet	Cast Iron	A126 CL. B
Stem	Brass	B124 C37700
Disc	2 only 2 1/2 & larger	Bronze Cast Iron
Disc seat ring	Bronze	B62
Body seat ring	Bronze	B62
Gland	11/2 to 14	Ductile Iron
Gland packing	Asbestos-free	
Gasket	Asbestos-free	
Gland bolt/nut	Carbon Steel	
Bonnet bolt/nut	Carbon Steel	
Yoke bushing	Bronze	B62
Hand wheel	2 to 6 8 only	Cast Iron Ductile Iron

### Design Specifications

Items	
Shell wall thickness and general valve design	KITZ Standard
Face-to-face dimensions End-to-end dimensions	ASME B16.10 Class 125
End flange dimensions Gasket contact facing	ASME B16.1 Class 125

### Dimensions

Valve Size	inch	2	2 1/2	3	4	5	6	8
	mm	50	65	80	100	125	150	200
L Face-to-face		203	216	241	292	330	356	495
H Height (OPEN)		277	307	353	404	469	533	642
D Handwheel Diameter		180	180	225	280	300	350	450

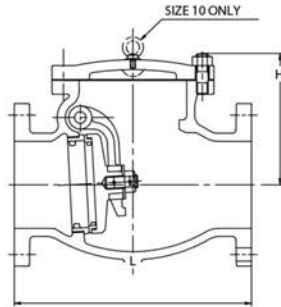
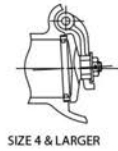
# 16 BAR SWING CHECK VALVE

Cast Iron Body, Bolted Cover, Swing Type Disc

ANSI STANDARD

Maximum Working Pressure 16.33Kgf/cm<sup>2</sup>  
(120°C W.O.G. Non-Shock)

Fig. 125FCO



## Materials

Parts	Material	ASTM Spec.
<b>Body</b>	Cast Iron	A126 CL. B
<b>Cover</b>	Cast Iron	A126 CL. B
<b>Hinge pin</b>	Brass	B124 C37700
<b>Disc</b>	2 to 4	Bronze
	5 & larger	Cast Iron
<b>Disc seat ring</b>	Bronze	B62
<b>Body seat ring</b>	Bronze	B62
<b>Arm</b>	Stainless Steel	A315 Gr.CF8
<b>Gasket</b>	Asbestos-free	
<b>Cover bolt/nut</b>	Carbon Steel	

## Design Specifications

Items	
Shell wall thickness and general valve design	KITZ Standard
Face-to-face dimensions End-to-end dimensions	ASME B16.10 Class 125
End flange dimensions Gasket contact facing	ASME B16.1 Class 125

## Dimensions

Valve Size	inch	2	2 1/2	3	4	5	6	8	10	mm
	mm	50	65	80	100	125	150	200	250	
<b>L</b> Face-to-face		203	216	241	292	330	356	495	622	
<b>H</b> Height (OPEN)		111	121	145	165	207	225	268	315	

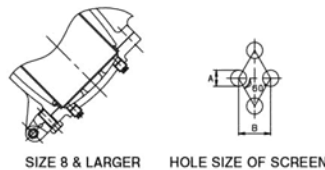
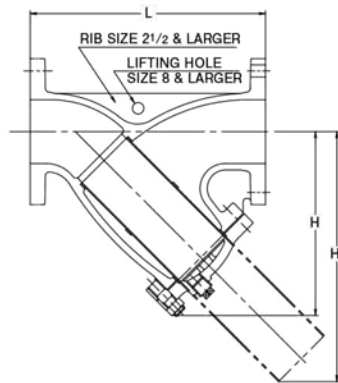
# 16 BAR Y-PATTERN STRAINER

Cast Iron Body, Bolted Cover, Y-Pattern Body, Punched Stainless Steel Plate Screen

ANSI STANDARD

Maximum Working Pressure 16.33Kgf/cm<sup>2</sup>  
(120°C W.O.G. Non-Schock)

Fig. 125FCY



## Materials

Parts	Material	ASTM Spec.
<b>Body</b>	Cast Iron	A126 CL.B
<b>Cover</b>	Cast Iron	A126 CL.B
<b>Screen</b>	Stainless Steel	A167 Type304
<b>Gasket</b>	Asbestos-free	
<b>Cover bolt/nut</b>	Carbon Steel	A307 Gr.B
<b>Plug</b>	1 1/2 to 6	Stainless Steel
		A276 Type304

## Screen dimensions

Valve Size	A	B
2 only	1.4 ø	2.4mm
2 1/2 to 5	1.5 ø	2.5mm
6 & 8	3.0 ø	5.0mm
10 & 14	5.0 ø	7.0mm

## Design Specifications

Items	
Shell wall thickness and general valve design	KITZ Standard
Face-to-face dimensions End-to-end dimensions	KITZ Standard
End flange dimensions Gasket contact facing	ASME B16.1 Class 125

## Dimensions

Valve Size	inch	2	2 1/2	3	4	5	6	8	10	12	14	mm
	mm	50	65	80	100	125	150	200	250	300	350	
<b>L</b> Face-to-face		250	285	315	370	420	490	570	680	800	950	
<b>H</b> Height		168	212	242	284	325	370	440	515	600	740	
<b>H<sub>1</sub></b>		208	289	335	388	446	497	589	694	818	993	



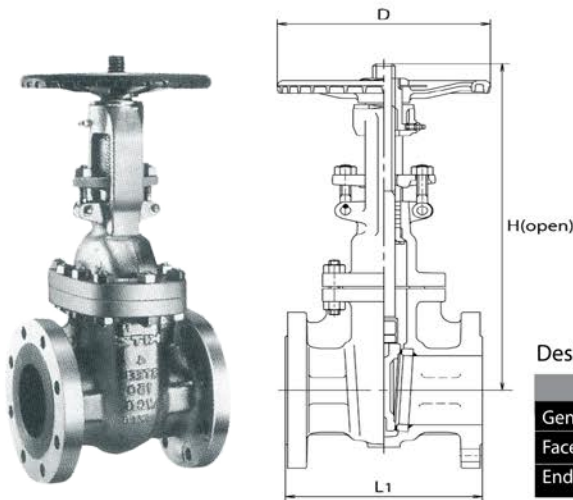
# 20 BAR GATE VALVE

Carbon Steel Body, Bolted Bonnet, Outside Screw & Yoke, Rising Stem, Flexible Wedge, Non Rising Handwheel

ANSI STANDARD

Maximum Working Pressure 20Kgf/cm<sup>2</sup>  
(38°C W.O.G)

Fig. 150SCLS



### Design Specification

Item	
General Design	API 600
Face-to-face dimension	ASME B16.10 Class 150
End flange dimensions	ASME B16.5 Class 150

### Materials

Parts	Material
Body	ASTM A216 Gr. WCB
Bonnet	ASTM A216 Gr. WCB
Stem	ASTM A182 Gr.F6a
Disc	13 Cr/ Carbon Steel + 13Cr
Body Seat ring	Carbon steel + HF*
Gland	ASTM A182 Gr. F6a
Gland packing	Flexible Graphite
Gland flange	ASTM A105/A216 Gr.WCB
Handwheel	Ductile Iron
Gasket	Graphite Corrugated Metal
Bonnet bolt/nut	ASTM A193 Gr.B7/A194 Gr.2H
Gland bolt/nut	ASTM A576 Gr. 1045/A194 Gr. 2H
Bonnet bushing	ASTM A182 Gr.F6a
Yoke sleeve	ASTM A439 Tp.D2
Grease nipple	Carbon Steel

\* hard facing with Co-Cr-W Alloy

### Dimensions

Nominal Size	1 1/2	2	2 1/2	3	4	5	6	8	10	12	14	16	18	20	22	24	26	28	30	32	34	36	
L <sub>1</sub>	in	6.50	7.00	7.50	8.00	9.00	10.00	10.50	11.50	13.00	14.00	15.00	16.00	17.00	18.00	19.00	20.00	22.00	24.00	26.00	28.00	28.00	
	mm	165	178	190	203	229	254	267	292	330	356	381	406	432	457	483	508	559	610	660	711	711	
H	in	15.2	15.2	17.0	20.1	23.3	25.9	29.9	37.8	45.8	53.6	61.9	66.6	74.3	83.6	91.6	98.1	111.6	118.7	123.4	132.3	141.7	149.0
	mm	385	385	432	509	592	658	758	958	1162	1362	1572	1692	1888	2123	2326	2497	2835	3015	3135	3360	3600	3785
D	in	7.9	7.9	7.9	9.8	9.8	11.8	11.8	13.8	15.7	17.7	19.7	23.6	23.6	26.8	26.8	29.9	19.7	23.6	23.6	23.6	23.6	23.6
	mm	200	200	200	250	250	300	300	350	400	450	500	600	600	680	680	760	500	600	600	600	600	600

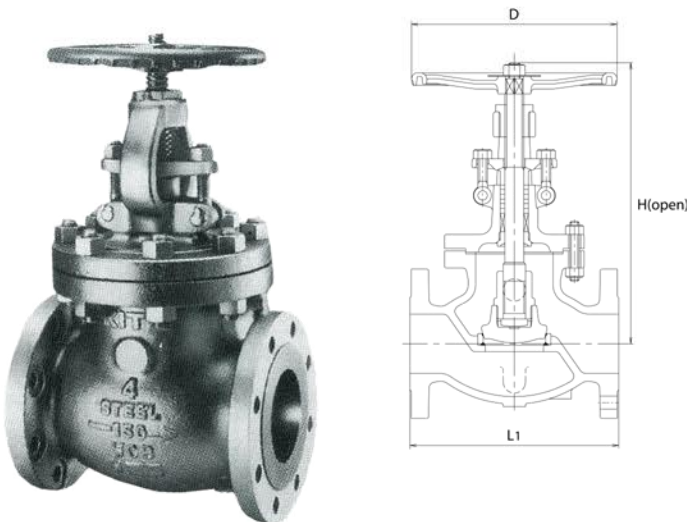
# 20 BAR GLOBE VALVE

Carbon Steel Body, Bolted Bonnet, Outside Screw & Yoke, Rising Stem Handwheel, Swivel Disc

ANSI STANDARD

Maximum Working Pressure 20Kgf/cm<sup>2</sup>  
(38°C W.O.G)

Fig. 150SCJS



### Materials

Parts	Material
Body	ASTM A216 Gr WCB
Bonnet	ASTM A216 Gr WCB
Stem	ASTM A276 Tp.403
Disc	13 Cr/ Carbon Steel + 13Cr
Locknut	ASTM A182 Gr.F6a
Body Seat ring	Carbon steel + HF*
Gland	ASTM A182 Gr. F6a
Gland packing	Flexible Graphite
Gland flange	ASTM A105/A216 Gr.WCB
Handwheel	Ductile Iron
Gasket	Graphite Corrugated Metal
Bonnet bolt/nut	ASTM A193 Gr.B7/A194 Gr.2H
Gland bolt/nut	ASTM A576 Gr. 1045/A194 Gr. 2H
Bonnet bushing	ASTM A182 Gr.F6a
Yoke sleeve	ASTM A439 Tp.D2

\* hard facing with Co-Cr-W Alloy

### Design Specification

Item	
General Design	API 600
Face-to-face dimension	ASME B16.10 Class 150
End flange dimensions	ASME B16.5 Class 150

### Dimensions

Nominal Size	1 1/2	2	2 1/2	3	4	5	6	8	10	12	14	16	18
L <sub>1</sub>	in	6.50	8.00	8.50	9.50	11.50	14.00	19.50	24.50	27.50	31.00	36.00	38.50
	mm	165	203	216	241	292	356	495	622	698	787	914	978
H	in	13.1	13.1	14.9	15.4	18.1	19.1	20.2	24.8	38.5	41.3	43.5	49.8
	mm	332	332	379	390	460	464	513	630	979	1049	1106	1264
D	in	7.9	7.9	9.8	9.8	9.8	11.8	13.8	15.7	19.7	19.7	23.6	23.6
	mm	200	200	250	250	250	300	350	400	500	500	600	600

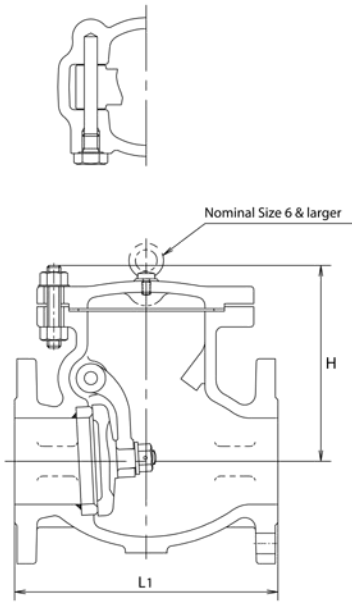
# 20 BAR SWING CHECK VALVE

**Carbon Steel Body,  
Bolted Cover, Swing Type Disc**

ANSI STANDARD

Maximum Working Pressure 20Kgf/cm<sup>2</sup>  
(38°C W.O.G)

Fig. 150SCOS



### Materials

Parts	Material
Body	ASTM A216 Gr. WCB
Cover	ASTM A105/A216 Gr. WCB
Disc	13 Cr/ Carbon Steel + 13Cr
Disc nut	ASTM A194 Gr.8
Body Seat ring	Carbon steel + HF*
Cover bolt/nut	ASTM A193 Gr.87/A194 Gr.2H
Arm	ASTM A105 (1 1/2 - 14) ASTM A216 Gr. WCB (16 and Larger)
Gasket	Graphite Corrugated Metal
Plug	ASTM A576 Gr.1045

\* hard facing with Co-Cr-W Alloy

### Design Specification

Item	
General Design	API 600
Face-to-face dimension	ASME B16.10 Class 150
End flange dimensions	ASME B16.5 Class 150

### Dimensions

Nominal Size	Nominal Size																			
	1 1/2	2	2 1/2	3	4	5	6	8	10	12	14	16	18	20	22	24	26	28	30	
L <sub>1</sub>	in	6.50	8.00	8.50	9.50	11.50	13.00	14.00	19.50	24.50	27.50	31.00	34.00	38.50	38.50	42.00	51.00	51.00	57.00	60.00
	mm	165	203	216	241	292	330	356	495	622	698	787	864	978	978	1067	1295	1295	1448	1524
H	in	5.3	6.0	6.7	7.1	7.9	9.25	9.8	11.6	13.2	14.5	16.3	18.1	20.1	23.0	23.0	24.8	26.8	28.2	29.9
	mm	135	152	170	180	200	235	250	295	334	368	415	460	510	583	585	630	680	716	760

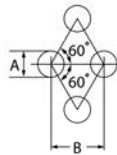
# 20 BAR Y-PATTERN STRAINER

**Ductile Cast Iron Body,  
B.C. or S.C, Y-Pattern Body**

JIS STANDARD

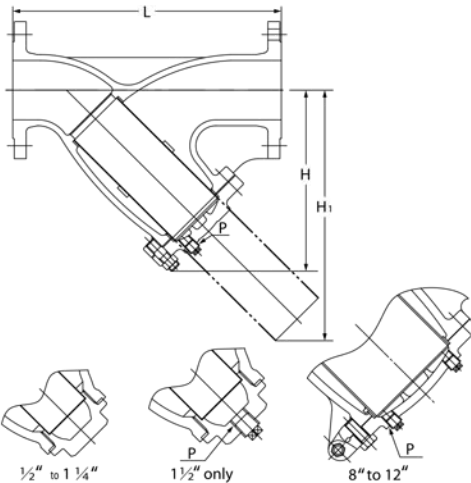
Maximum Working Pressure 22Kgf/cm<sup>2</sup>  
(120°C Static Water)

Fig. 16FDYB



### Screen Hole Size

Valve Size	A	B
1/2" to 2"	1.4	2.4
2 1/2" to 5"	1.5	2.5
6" to 8"	3	5
10" to 12"	5	7



### Materials

Parts	JIS material
Body	FCD-5
Cap ( 1/2" ~ 1 1/2" )	C3771BE
Cover ( 2" ~ 12" )	FCD-5
Gasket	Non-Asebestos ( 2" ~ 12" : Flexible Graphite)
Screen	SUS 304
Cover bolt	Carbon Steel
Plug*	SUS 304

2 drain plugs will be provided for 8" & larger sizes.

### Design Specification

Item	
General Design	KITZ Standard
Face-to-face dimension	KITZ Standard
End flange dimensions	JIS B2239 16K

### Dimensions

Size	mm															
	mm	15	20	25	32	40	50	65	80	100	125	150	200	250	300	
L	inch	1/2	3/4	1	1 1/4	1 1/2	2	2 1/2	3	4	5	6	8	10	12	
L	mm	125	140	150	170	190	250	305	360	415	465	515	580	680	800	
H	mm	57	63	77	90	100	168	212	242	284	325	370	462	536	625	
P		-	-	-	-	Rc 3/8	Rc 1/4	Rc 1/4	Rc 1/4	Rc 3/4	Rc 3/4	Rc 3/4	Rc 3/4	Rc 3/4	Rc 3/4	
H <sub>1</sub>	mm	82	91	114	134	146	218	285	340	391	450	502	645	757	882	





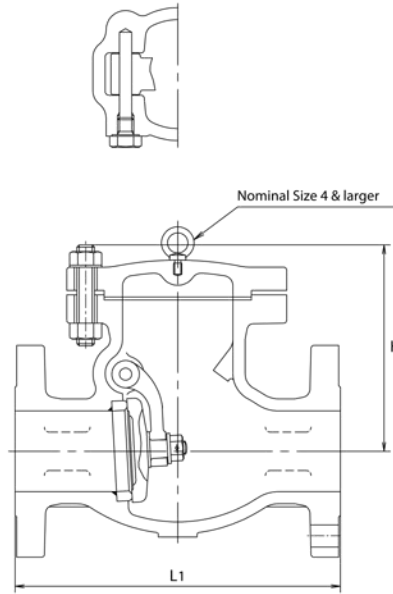
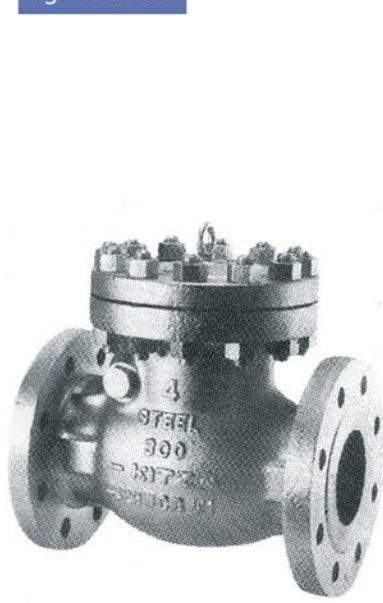
# 25 BAR SWING CHECK VALVE

**Carbon Steel Body, Bolted Cover, Swing Type Disc**

ANSI STANDARD

Maximum Working Pressure 52Kgf/cm<sup>2</sup>  
(38°C W.O.G.)

Fig. 300SCOS



### Materials

Parts	MATERIAL
Body	ASTM A216 Gr WCB
Cover	ASTM A105/A216 Gr. WCB
Disc	13 Cr/ Carbon Steel + 13Cr
Disc nut	ASTM A194 Gr.8
Body Seat ring	Carbon steel + HF*
Cover bolt/nut	ASTM A193 Gr.B7/A194 Gr.2H
Arm	ASTM A105 (1 1/2 - 12)
	ASTM A216 Gr. WCB (14 and Larger)
Gasket	Spiral Wound
Plug	ASTM A576 Gr.1045

\* hard facing with Co-Cr-W Alloy

### Design Specification

Item	
General Design	API 600
Face-to-face dimension	ASME B16.10 Class 300
End flange dimensions	ASME B16.5 Class 300

### Dimensions

Nominal Size	Nominal Size																	
	1 1/2	2	2 1/2	3	4	5	6	8	10	12	14	16	18	20	24	28	30	
L <sub>1</sub>	in	9.50	10.50	11.50	12.50	14.00	15.75	17.50	21.00	24.50	28.00	33.00	34.00	38.50	40.00	53.00	59.00	62.75
	mm	241	267	292	318	356	400	444	533	622	711	838	864	978	1016	1346	1499	1594
H	in	5.5	6.5	7.5	8.1	8.9	9.8	10.7	13.0	14.2	16.0	18.9	21.1	22.6	24.8	31.7	36.6	38.4
	mm	140	165	190	205	225	250	272	330	360	406	480	535	575	630	805	930	975

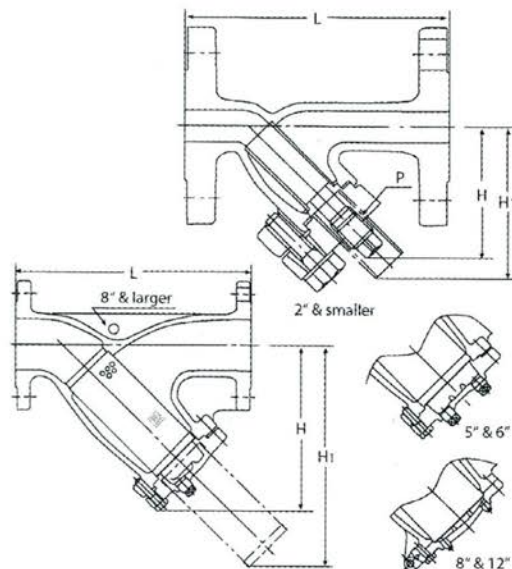
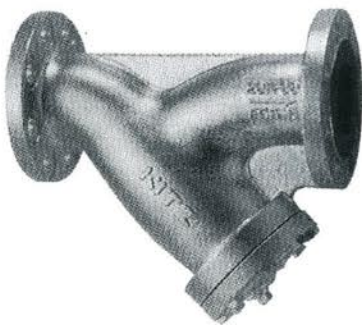
# 25 BAR Y-PATTERN STRAINER

**Ductile Cast Iron Body, Bolted Cover, Y-Pattern Body**

JIS STANDARD

Maximum Working Pressure 28Kgf/cm<sup>2</sup>  
(120°C Static Water)

Fig. 20FDYB



### Materials

Parts	Material
Body	FCD- S
Cover	FCD- S
Gasket	Flexible Graphite
Screen*	SUS 304
Plug	SUS 304
Cover bolt	Carbon Steel

\* 40mesh wire cloth (reinforced with SUS 304 punched plate)

### Design Specification

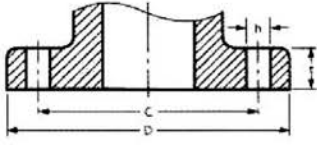
Item	
General Design	KITZ Standard
Face-to-face dimension	KITZ Standard
End flange dimensions	JIS B2239 20K

### Dimensions

Size	mm															
	10	15	20	25	32	40	50	65	80	100	125	150	200	250	300	
L	120	125	140	160	185	200	250	305	360	415	465	515	620	760	870	
H	65	65	70	85	124	135	163	222	254	294	335	382	442	548	654	
H1	74	74	74	105	126	139	172	299	345	398	457	508	570	733	895	
P	Rc1/4	Rc1/4	Rc3/8	Rc1/2	Rc3/4	Rc1	Rc1 1/4	Rc1/2	Rc1/2	Rc3/4	Rc3/4	Rc3/4	Rc1	Rc1	Rc1	



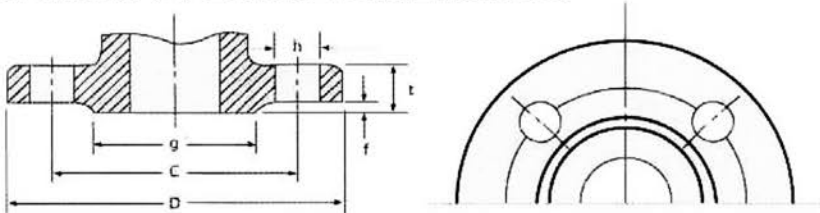
# PIPE FLANGE DIMENSIONS



## Class 125 ASME B16.1 - 1989

Nominal Size		D		C		t		h (Bolt Holes)		D	
in.	mm.	in.	mm.	in.	mm.	in.	mm.	in.	mm.	Number	Diam.
1	25	4.25	108	3.12	79.5	0.44	11.2	0.62	16	4	1/2
1 1/4	32	4.62	117	3.50	89.0	0.50	12.7	0.62	16	4	1/2
1 1/2	40	5.00	127	3.88	98.5	0.56	14.3	0.62	16	4	1/2
2	50	6.00	152	4.75	120.5	0.62	15.9	0.75	19	4	5/8
2 1/2	65	7.00	178	5.50	139.5	0.69	17.5	0.75	19	4	5/8
3	80	7.50	190	6.00	152.5	0.75	19.1	0.75	19	4	5/8
4	100	9.00	229	7.50	190.5	0.94	23.9	0.75	19	8	5/8
5	125	10.00	254	8.50	216.0	0.94	23.9	0.88	22	8	3/4
6	150	11.00	279	9.50	241.5	1.00	25.4	0.88	22	8	3/4
8	200	13.50	343	11.75	298.5	1.12	28.6	0.88	22	8	3/4
10	250	16.00	406	14.25	362.0	1.19	30.2	1.00	25	12	7/8
12	300	19.00	483	17.00	432.0	1.25	31.8	1.00	25	12	7/8
14	350	21.00	533	18.75	476.5	1.38	35.0	1.12	29	12	1
16	400	23.50	597	21.25	539.5	1.44	36.6	1.12	29	16	1
18	450	25.00	635	22.75	578.0	1.56	39.7	1.25	32	16	1 1/8
20	500	27.50	699	25.00	635.0	1.69	42.9	1.25	32	20	1 1/8
24	600	32.00	813	29.50	749.5	1.88	47.8	1.38	35	20	1 1/4

# STEEL PIPE FLANGE DIMENSIONS



f: Height of raised face

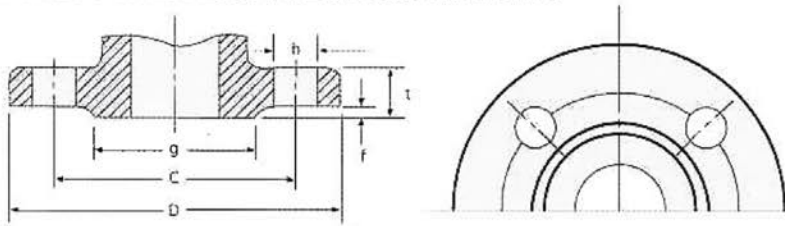
## JIS 16K Steel Pipe Flange Dimensions

JIS B 2239-1996

Nominal Size		Flange Diam. (D)	Dimension of Flange Part			Bolt Holes		Bolt Size	
mm	inch		Thickness (t)	Raised Height (f)	Face Diam. (g)	Circle Diam. (C)	Number		Hole Diam. (h)
10	3/8	90	12	1	46	65	4	15	M12
15	1/2	95	12	1	51	70	4	15	M12
20	3/4	100	14	1	56	75	4	15	M12
25	1	125	14	1	67	90	4	19	M16
32	1 1/4	135	16	2	76	100	4	19	M16
40	1 1/2	140	16	2	81	105	4	19	M16
50	2	155	16	2	96	120	8	19	M16
65	2 1/2	175	18	2	116	140	8	19	M16
80	3	200	20	2	132	160	8	23	M20
100	4	225	22	2	160	185	8	23	M20
125	5	270	22	2	195	225	8	25	M22
150	6	305	24	2	230	260	12	25	M22
200	8	350	26	2	275	305	12	25	M22
250	10	430	28	2	345	380	12	27	M24
300	12	480	30	3	395	430	16	27	M24
350	14	540	34	3	440	480	16	33	M30
400	16	605	38	3	495	540	16	33	M30



# STEEL PIPE FLANGE DIMENSIONS



f: Height of raised face

## JIS 20K Steel Pipe Flange Dimensions

JIS B 2239-1996

Nominal Size		Flange Diam. (D)	Dimension of Flange Part			Bolt Holes			Bolt Size
mm	inch		Thickness (t)	Raised Height (f)	Face Diam. (g)	Circle Diam. (C)	Number	Hole Diam. (h)	
10	3/8	90	14	1	46	65	4	15	M12
15	1/2	95	14	1	51	70	4	15	M12
20	3/4	100	16	1	56	75	4	15	M12
25	1	125	16	1	67	90	4	19	M16
32	1 1/4	135	18	2	76	100	4	19	M16
40	1 1/2	140	18	2	81	105	4	19	M16
50	2	155	18	2	96	120	8	19	M16
65	2 1/2	175	20	2	116	140	8	19	M16
80	3	200	22	2	132	160	8	23	M20
100	4	225	24	2	160	185	8	23	M20
125	5	270	26	2	195	225	8	25	M22
150	6	305	28	2	230	260	12	25	M22
200	8	350	30	2	275	305	12	25	M22
250	10	430	34	2	345	380	12	27	M24
300	12	480	36	3	395	430	16	27	M24
350	14	540	40	3	440	480	16	33	M30
400	16	605	46	3	495	540	16	33	M30

## Class 150 Steel Pipe Flange Dimensions

ASME B 16.5-1996

Nominal Size		Flange Diam. (D)	Dimension of Flange Part			Bolt Holes			Bolt Size
mm	inch		Thickness (t)	Raised Height (f)	Face Diam. (g)	Circle Diam. (C)	Number	Hole Diam. (h)	
15	1/2	89	11	1.6	35	60.5	4	16	1/2
20	3/4	98	12.7 (11.1)	1.6	43	70.0	4	16	1/2
25	1	108	14.3 (11.1)	1.6	51	79.5	4	16	1/2
32	1 1/4	117	15.9 (12.7)	1.6	64	89.0	4	16	1/2
40	1 1/2	127	17.5 (14.3)	1.6	73	98.5	4	16	1/2
50	2	152	19.1 (15.9)	1.6	92	120.5	4	19	5/8
65	2 1/2	178	22.3 (17.5)	1.6	105	139.5	4	19	5/8
80	3	190	23.9 (19.1)	1.6	127	152.5	4	19	5/8
100	4	229	23.9	1.6	157	190.5	8	19	5/8
125	5	254	23.9	1.6	186	216.0	8	22	3/4
150	6	279	25.4	1.6	216	241.5	8	22	3/4
200	8	343	28.6	1.6	270	298.5	8	22	3/4
250	10	406	30.2	1.6	324	362.0	12	25	7/8
300	12	483	31.8	1.6	381	432.0	12	25	7/8
350	14	533	35	1.6	413	476.5	12	29	1
400	16	597	36.6	1.6	470	539.5	16	29	1

## Class 300 Steel Pipe Flange Dimensions

ASME B 16.5-1996

Nominal Size		Flange Diam. (D)	Dimension of Flange Part			Bolt Holes			Bolt Size
mm	inch		Thickness (t)	Raised Height (f)	Face Diam. (g)	Circle Diam. (C)	Number	Hole Diam. (h)	
15	1/2	95	14.3	1.6	35	66.5	4	16	1/2
20	3/4	117	15.9	1.6	43	82.5	4	19	5/8
25	1	124	17.5	1.6	51	89.0	4	19	5/8
32	1 1/4	133	19.1	1.6	64	98.5	4	19	5/8
40	1 1/2	156	20.7	1.6	73	114.5	4	22	3/4
50	2	165	22.3	1.6	92	127.0	8	19	5/8
65	2 1/2	190	25.4	1.6	105	149.0	8	22	3/4
80	3	210	28.6	1.6	127	168.0	8	22	3/4
100	4	254	31.8	1.6	157	200.0	8	22	3/4
125	5	279	35.0	1.6	186	235.0	8	22	3/4
150	6	318	36.6	1.6	216	270.0	12	22	3/4
200	8	381	41.3	1.6	270	330.0	12	25	7/8
250	10	444	47.7	1.6	324	387.5	16	29	1
300	12	521	50.8	1.6	381	451.0	16	32	1 1/8
350	14	584	54.0	1.6	413	514.5	20	32	1 1/8
400	16	648	57.2	1.6	470	571.5	20	35	1 1/4

# Project Reference

## Comercial Building

### Jakarta

Hilton Hotel  
Shangri-La Hotel  
Bank Indonesia Tower  
Jakarta Stock Exchange Building  
Mega Mall PLuit  
Trans TV Tower  
WTC Mangga Dua  
Mangga Dua Square  
Lindeteves Trade Centre  
Kenari Mas Plaza  
Pulogadung Trade Centre  
ITC- Depok  
Gajah Mada Square  
Margocity Trade Centre  
Manhattan Hotel  
Mall Artha Gading  
RS Mitra Keluarga Kelapa Gading  
RS Mitra Keluarga Bekasi Timur  
Novotel Mangga Dua

### Surabaya

Hyatt Regency Hotel  
Shangri-La Hotel  
Tunjungan Plaza III & IV  
JW Marriot Hotel  
Galaxi Mall  
Supermall Pakuwon  
Sun City  
Golden City Mall

### Other

Ritz Carlton Hotel, Bali  
Grand Paladium, Medan  
Citra Seraya, Pekanbaru  
Mall SKA, Pekanbaru  
Hotel Rafflesia, Batam  
Batam City Square, Batam  
Pasific Hotel, Balikpapan  
Mega Mall, Manado

## Residential/ Apartements

### Jakarta

Casablanca Apartement  
Taman Kemayoran Apartement  
Ascott Condominium  
Four Season Apartement  
Aston Apartement  
Pakubuwono Residence  
Gajah Mada Mediterania Apartement  
Tanjung Duren Mediterania Apartement  
Kemayoran Mediterania Apartement  
Lagoon Mediterania Apartement  
Boulevard Mediterania Apartement  
Permata Berlian Apartement  
Mall Ambassador  
ITC Permata Hijau  
Kelapa Gading Mediterania Apartement  
Boulevard Kelapa Gading Apartement  
Menara 7 Gading Apartement

### Other

Casa Grande Apartement, Surabaya  
Setiabudi Residence, Bandung  
Ciumbeuleuit Residence, Bandung  
Majesty Residence, Bandung





 **CAUTION**

Pressure-temperature ratings and other performance data published in this catalog have been developed from our design calculation, in-house testing, field report provided by our customers and/or published official standards or specifications. They are good only to cover typical applications as a general guideline to users of KITZ products introduced in this catalog.

For any specific application, users are kindly requested to contact KITZ Corporation for technical advice, or carry out their own study and evaluation for proving suitability of these products to such an application. Failure to follow this request could result in property damage and/or personal injury, for which we shall not be liable.

While this catalog has been compiled with the utmost care, we assume no responsibility for errors, impropriety or inadequacy. Any information provided in this catalog is subject to from-time-to-time change without notice for error rectification, product discontinuation, design modification, new product introduction or any other cause that KITZ Corporation considers necessary. This edition cancels all previous issues.

ISO 9001 certified since 1998

**KITZ**  
KITZ CORPORATION

Distributed by