

RUCIKA

Aplikasi Pipa Polyethylene untuk Jaringan Air Minum

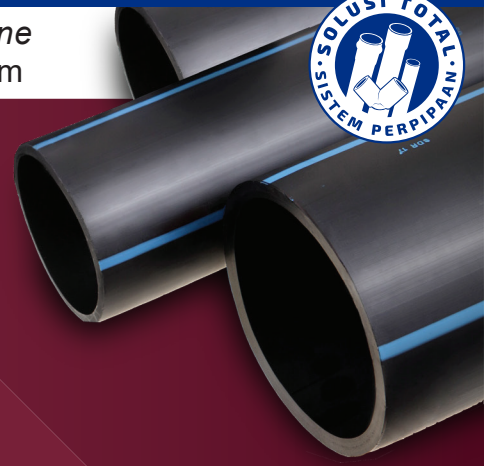


BLACK

DAFTAR HARGA PIPA HDPE



© 2021 JAPAN INSTITUTE OF PLANT MAINTENANCE



Efektif: 15 Agustus 2022

DIMENSI		PE-100											
		SDR 9 (PN 20)		SDR 11 (PN 16)		SDR 13,6 (PN 12,5)		SDR 17 (PN 10)		SDR 21 (PN 8)		SDR 26 (PN 6,3)	
OD (mm)	ND (Inch)	Tebal (mm)	Harga (Rp) (m)	Tebal (mm)	Harga (Rp) (m)	Tebal (mm)	Harga (Rp) (m)	Tebal (mm)	Harga (Rp) (m)	Tebal (mm)	Harga (Rp) (m)	Tebal (mm)	Harga (Rp) (m)
20	1/2"	2,30	-	1,90	6.700	-	-	-	-	-	-	-	-
25	3/4"	2,80	-	2,30	10.100	-	-	-	-	-	-	-	-
32	1"	3,60	-	2,90	16.200	-	-	-	-	-	-	-	-
40	1 1/4"	4,50	-	3,70	25.600	-	-	-	-	-	-	-	-
50	1 1/2"	5,60	-	4,60	39.600	3,70	32.600	3,00	27.100	-	-	-	-
63	2"	7,10	-	5,80	62.600	4,70	52.000	3,80	42.800	3,00	34.200	-	-
75	2 1/2"	8,40	105.200	6,80	87.400	5,50	72.400	4,50	60.300	3,60	49.100	-	-
90	3"	10,10	151.600	8,20	126.700	6,60	104.100	5,40	86.700	4,30	70.300	3,50	57.400
110	4"	12,30	225.200	10,00	187.700	8,10	156.000	6,60	129.000	5,30	105.500	4,30	86.800
125*	5"	14,00	291.300	11,40	243.600	9,20	201.100	7,40	164.600	6,00	134.900	4,80	109.600
140		15,70	364.900	12,70	-	10,30	-	8,30	-	6,70	-	5,40	-
160	6"	17,90	475.200	14,60	398.400	11,80	328.600	9,50	269.600	7,70	221.400	6,20	180.000
180*		20,10	601.200	16,40	-	13,30	417.100	10,70	341.100	8,60	-	6,90	-
200	8"	22,40	743.400	18,20	621.000	14,70	511.500	11,90	420.700	9,60	344.700	7,70	279.400
225*		25,20	940.900	20,50	785.900	16,60	649.600	13,40	533.700	10,80	435.600	8,60	351.400
250	10"	27,90	1.158.300	22,70	967.600	18,40	799.500	14,80	654.000	11,90	533.200	9,60	436.000
280*		31,30	1.453.500	25,40	1.211.800	20,50	1.000.500	16,60	821.700	13,40	672.800	10,70	543.000
315	12"	35,20	1.841.700	28,60	1.535.500	23,20	1.268.800	18,70	1.040.400	15,00	845.400	12,10	692.600
355	14"	39,70	2.335.300	32,20	1.946.800	26,10	1.610.800	21,10	1.323.900	16,90	1.073.600	13,60	874.100
400	16"	44,70	2.962.100	36,30	2.471.800	29,40	2.043.300	23,70	1.673.300	19,10	1.368.600	15,30	1.108.500
450*	18"	50,30	3.750.400	40,90	3.130.800	33,10	2.586.600	26,70	2.120.100	21,50	1.730.800	17,20	1.401.500
500	20"	55,80	4.621.500	45,40	3.862.100	36,80	3.189.800	29,60	2.611.600	23,90	2.135.400	19,10	1.728.900
560*	22"	62,20	5.798.300	50,80	4.838.400	41,20	4.003.400	33,20	3.281.500	26,70	2.699.600	21,40	2.167.100
630	24"	70,00	7.337.200	57,20	6.130.300	46,30	5.064.900	37,30	4.146.300	30,00	3.376.100	24,10	2.745.900
710	28"	-	-	-	-	-	6.431.500	42,10	5.272.900	33,90	4.298.300	27,20	3.489.900

*BERDASARKAN PERMINTAAN

Note :

1. HARGA BELUM TERMASUK PPN 11%, LOKO PABRIK DI CIBITUNG, BEKASI DIATAS TRUK
2. HARGA DAPAT BERUBAH SEWAKTU-WAKTU TANPA PEMBERITAHUAN TERLEBIH DAHULU
3. STANDARD: SNI 4829.2:2015; ISO 4427-2007
4. MATERIAL PE -100

PT WAHANA DUTA JAYA RUCIKA

ALIA Building 7th Floor, Jl. M.I Ridwan Rais 10-18,
Jakarta 10110 - INDONESIA

Telp: (021) 386 7717

Fax: (021) 386 7686

Email: info@rucika.co.id



f Rucika @rucikaofficial @rucikaofficial

www.rucika.co.id

15.08.2022

www.rucika.co.id

RUCIKA

Aplikasi Pipa Polyethylene untuk Jaringan Air Minum



BLACK

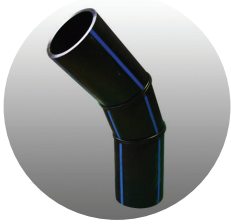
DAFTAR HARGA FITTING SEGMENTED HDPE



© 2021 JAPAN INSTITUTE OF PLANT MAINTENANCE

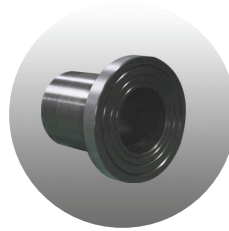


BEND 45DGR SEGMENTED



Size (mm)	Price/Unit (Rp)
63	172,000
75	207,000
90	243,000
110	360,000
160	764,000
200	1,191,000
250	2,093,000
315	2,944,000
355	4,168,000
400	4,781,000
450	6,400,000
500	7,828,000
560	8,177,000
630	12,302,000

STUB END INJECTION MOLDING



Size (mm)	Price/Unit (Rp)
63	76,000
75	129,000
90	161,000
110	177,000
160	557,000
200	1,089,000
250	1,407,000
315	2,795,000
355	3,848,000
400	5,361,000
450	6,711,000
500	8,247,000
630	18,371,000

BEND 90DGR SEGMENTED



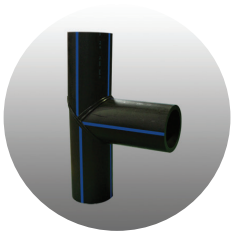
Size (mm)	Price/Unit (Rp)
63	166,000
75	250,000
90	251,000
110	338,000
160	718,000
200	1,230,000
250	2,093,000
315	3,042,000
355	4,793,000
400	5,498,000
450	7,360,000
500	9,002,000
560	9,403,000
630	15,540,000

FLANGE



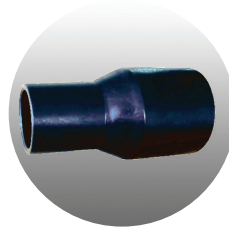
Size (mm)	Price/Unit (Rp)
63	147,000
75	194,000
90	240,000
110	367,000
160	566,000
200	902,000
250	1,177,000
315	2,445,000
400	4,584,000

EQUAL TEE SEGMENTED



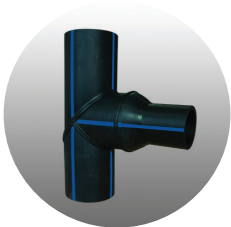
Size (mm)	Price/Unit (Rp)
63	294,000
75	328,000
90	259,000
110	384,000
160	965,000
200	1,270,000
250	1,979,000
315	3,140,000
355	4,442,000
400	5,953,000
450	8,333,000
500	9,790,000
560	12,878,000
630	16,541,000

REDUCER INJECTION MOLDING



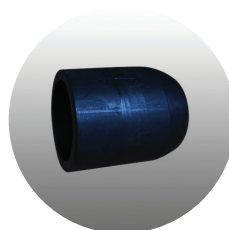
Size (mm)	Price/Unit (Rp)
90 X 75	363,000
90 X 63	305,000
110x63	363,000
110 X 90	465,000
160 X 90	756,000
160 X 110	814,000
200 X 160	1,571,000
200 X 110	1,394,000
250 X 160	2,541,000
250 X 200	2,730,000
315 X 200	6,041,000
315 X 250	6,346,000

UNEQUAL TEE SEGMENTED + INJECTION MOLDING



Size (mm)	Price/Unit (Rp)
90 X 75	622,000
90 X 63	564,000
110 x63	747,000
110 X 90	849,000
160 X 90	1,720,000
160 X 110	1,779,000
200 X 160	2,840,000
200 X 110	2,664,000
250 X 160	4,520,000
250 X 200	4,709,000
315 X 200	9,181,000
315 X 250	9,485,000

CAP INJECTION MOLDING



Size (mm)	Price/Unit (Rp)
63	169,000
75	218,000
90	276,000
110	410,000
160	901,000
200	1,743,000
250	2,832,000

Note :

1. Harga Belum Termasuk PPN 11%, Loko Pabrik Di Cibitung, Bekasi Diatas Truk
2. Harga Dapat Berubah Sewaktu-waktu Tanpa Pemberitahuan Terlebih Dahulu
3. Standard: SNI 4829.2:2015; ISO 4427-2007
4. Material PE -100